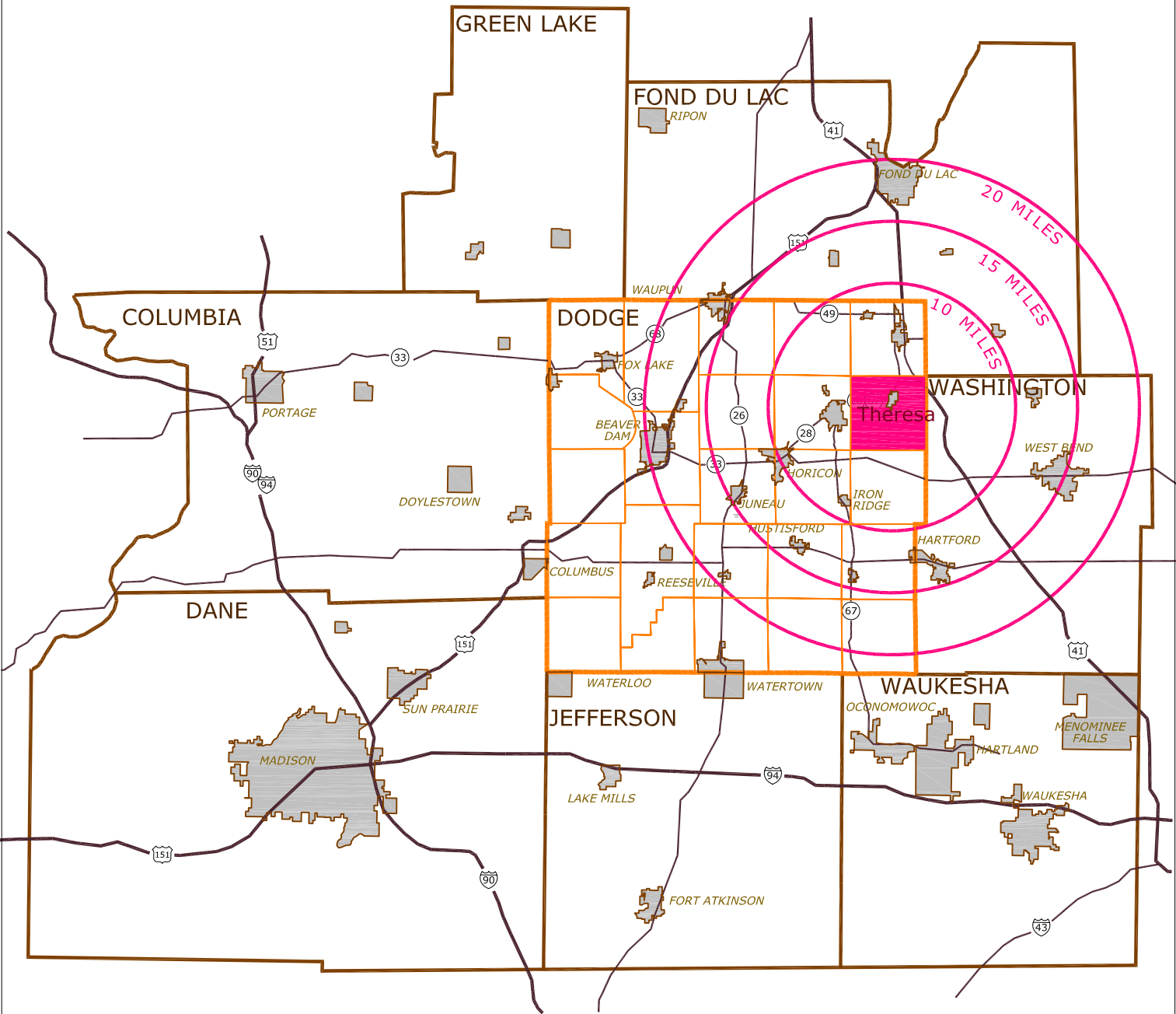
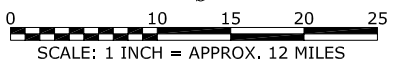
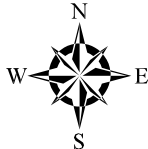


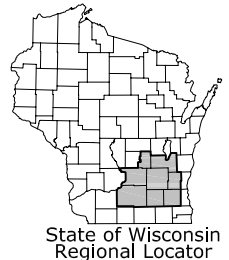
Map 1-1 Regional Setting Town of Theresa, Dodge County, Wisconsin



	U.S. Highway		Dodge County Town Boundary
	State Highway		City or Village
	County Boundary		Municipality Site
	Dodge County Boundary		Site Radius Boundary

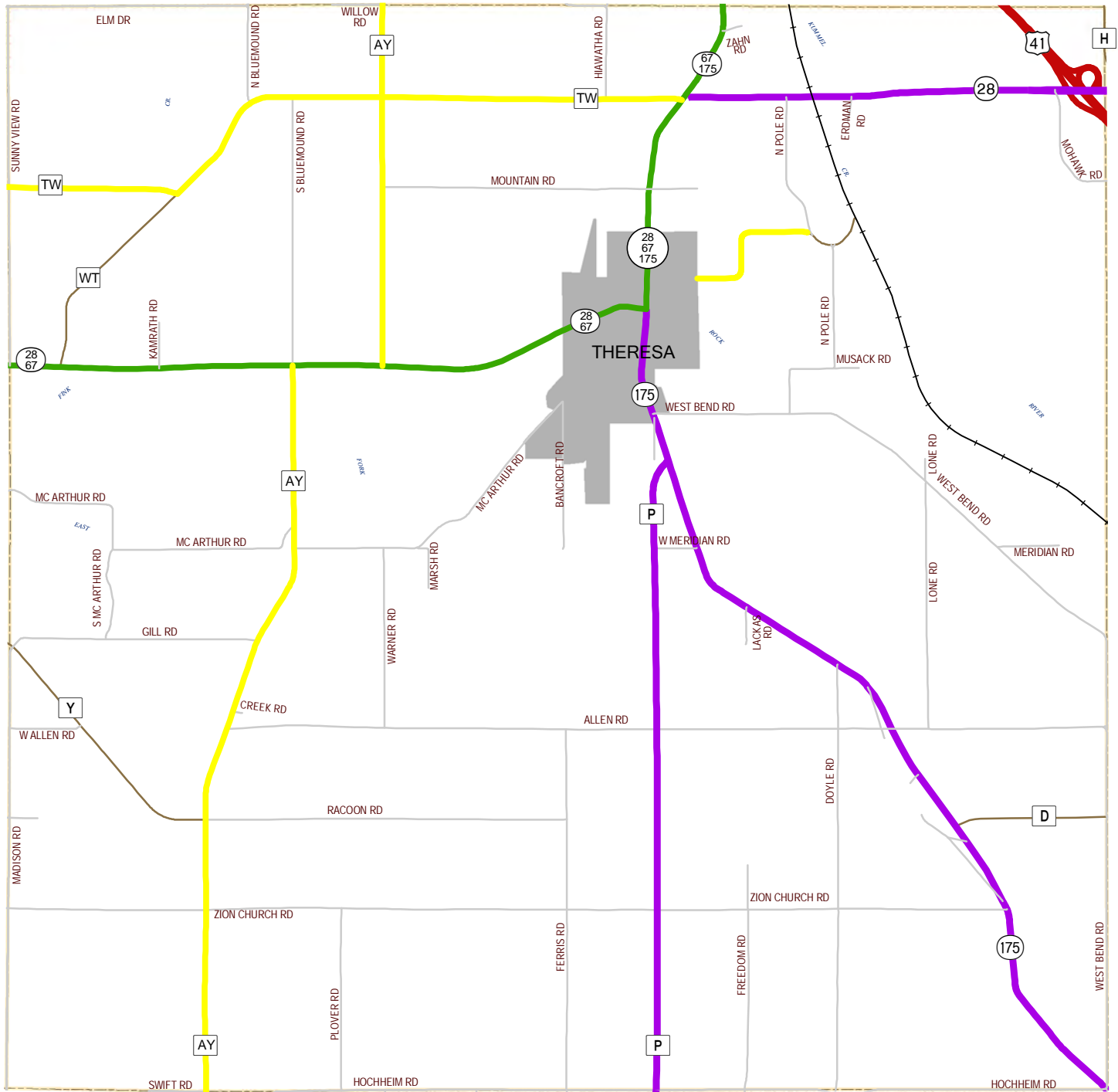


Dodge County
Land Resources and Parks
Department



Source: Dodge County Land Resources and Parks Department, January 2010.

Map 3-1, Functional Classification of Highways & Location of Railroads and Airports Town of Theresa, Dodge County, Wisconsin



Legend

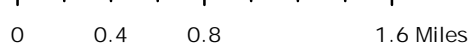
Functional Roadway Classification	Railroads
Principal Arterials	Airport
Minor Arterials	Town Boundaries
Major Collectors	Municipalities
Minor Collectors	Lake
Local	

Dodge County
Land Resources and Parks
Department

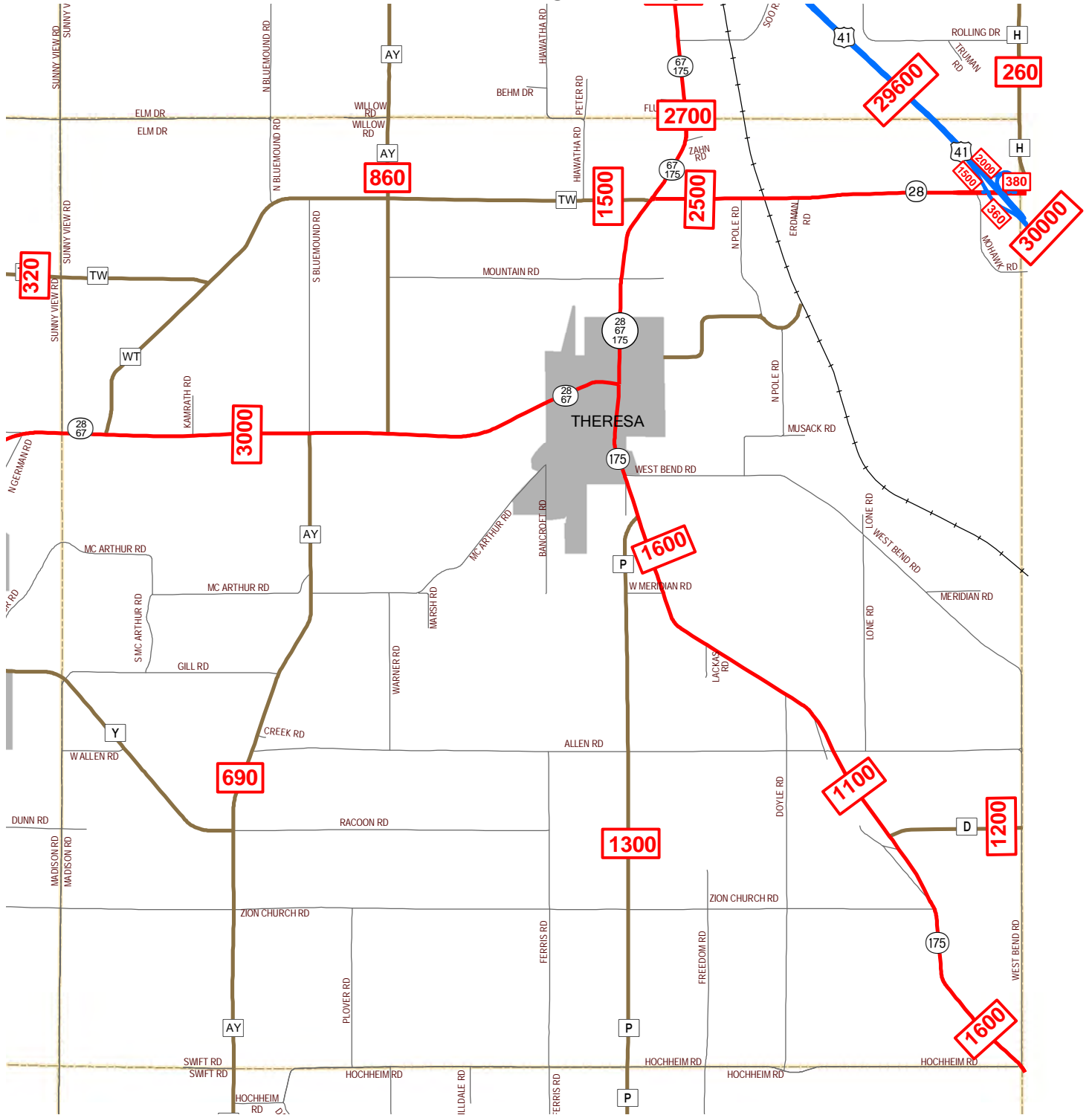
Dodge County Wisconsin

Town of Theresa

Source: Dodge County Land Resources and Parks Department, January 2010



Map 3-2, Average Daily Traffic Counts Town of Theresa, Dodge County, Wisconsin

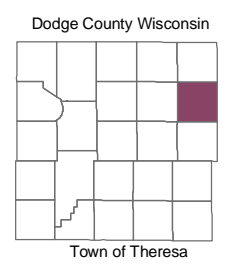


Legend

- U. S. Highway
- State Highway
- County Highway
- Town Road
- Railroad
- Town Boundary
- Average Daily Traffic Counts (2001)
- Waterbodies
- Municipalities



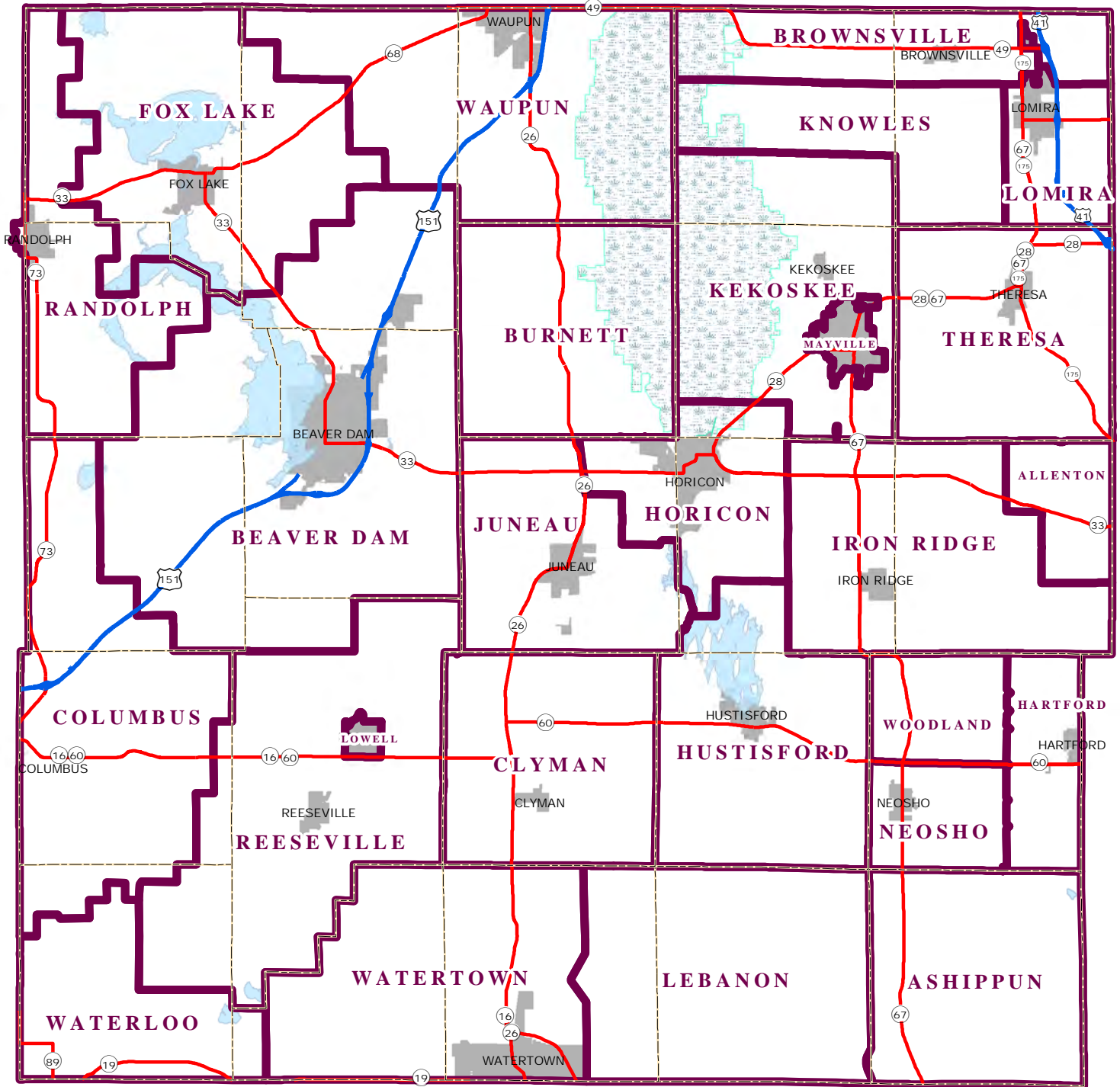
Dodge County
Land Resources and Parks
Department



Source: Dodge County Land Resources and Parks Department, January 2010
2002-2008 DOT data



Map 4-1, Fire Emergency Service Areas Dodge County, Wisconsin



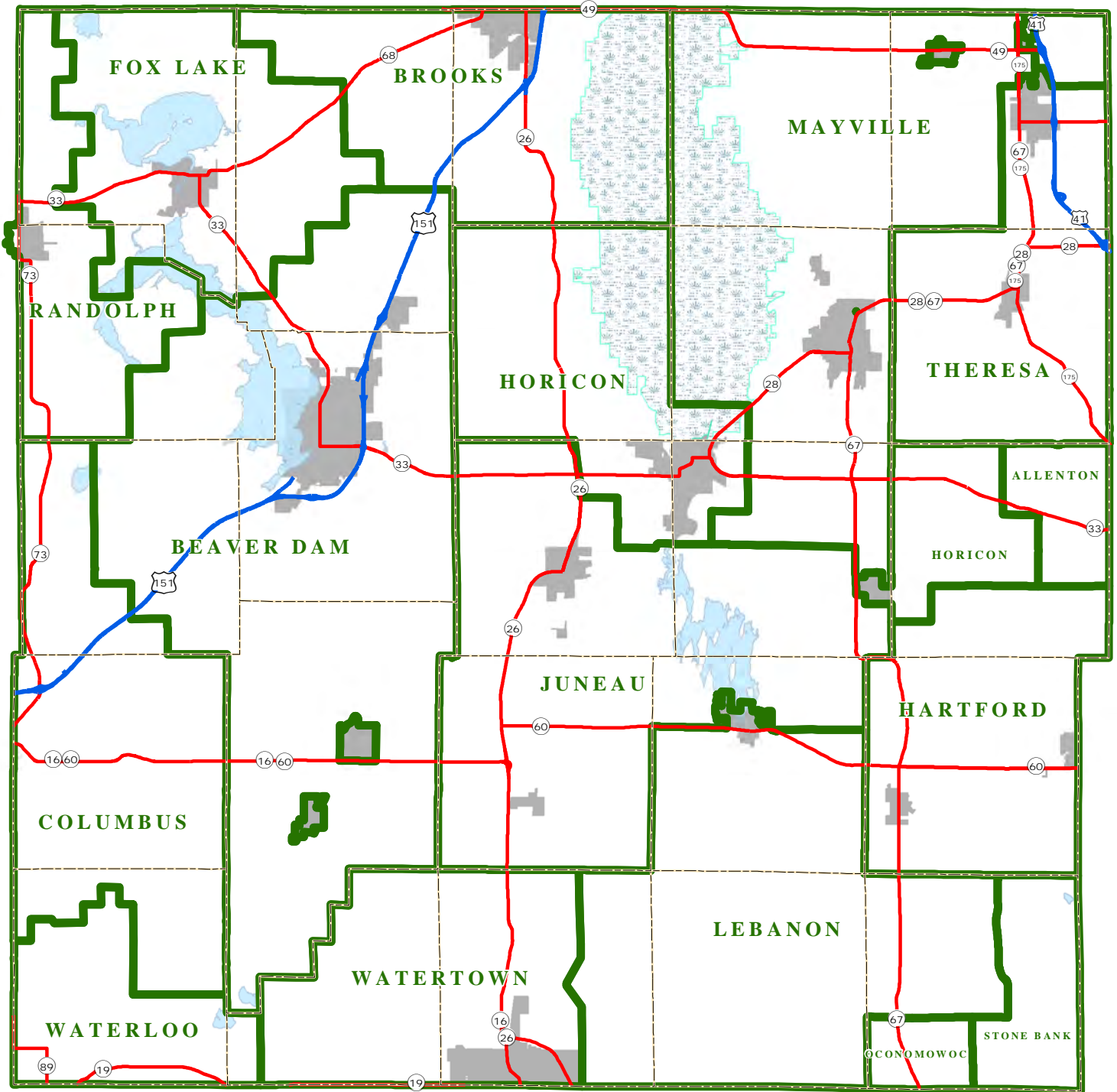
Legend

- U.S. Highway
- State Highway
- Town Boundaries
- Municipalities
- Fire Dispatch Regions
- Horicon Marsh
- Lake

Dodge County
Land Resources and Parks
Department

Source: Dodge County Land Resources and Parks Department, January 2010
Dodge County Sheriff's Department, January 2010

Map 4-2, Emergency Medical Service Areas Dodge County, Wisconsin

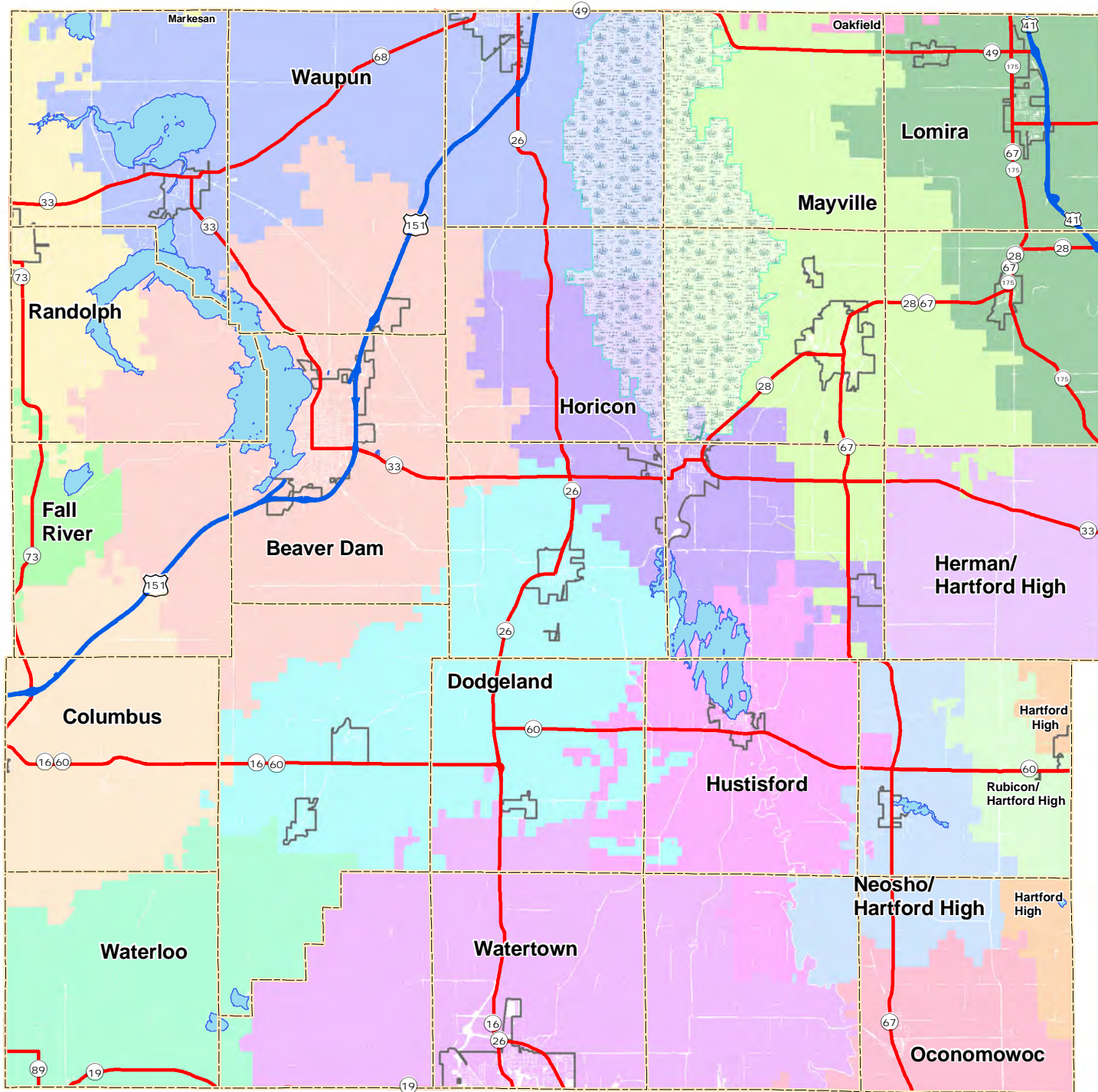


Legend

- U.S. Highway
- State Highway
- Town Boundaries
- Municipalities
- EMS Dispatch Regions
- Horicon Marsh
- Lake

Dodge County
Land Resources and Parks
Department

Map 4-3, School District Boundaries Dodge County, Wisconsin



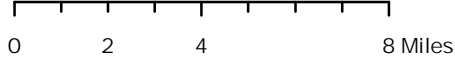
Legend		School District	
	U.S. Highway		BEAVER DAM
	State Highway		COLUMBUS
	Town Boundaries		DODGELAND (JUNEAU)
	Municipalities		FALL RIVER
	Horicon Marsh		HARTFORD J 1
	Lake		HERMAN #22
			HORICON
			HUSTISFORD
			LOMIRA
			MAYVILLE
			MARKESAN
			NEOSHO J 3
			OAKFIELD
			OCONOMOWOC AREA
			RANDOLPH
			RUBICON J 6
			WATERLOO
			WATERTOWN
			WAUPUN



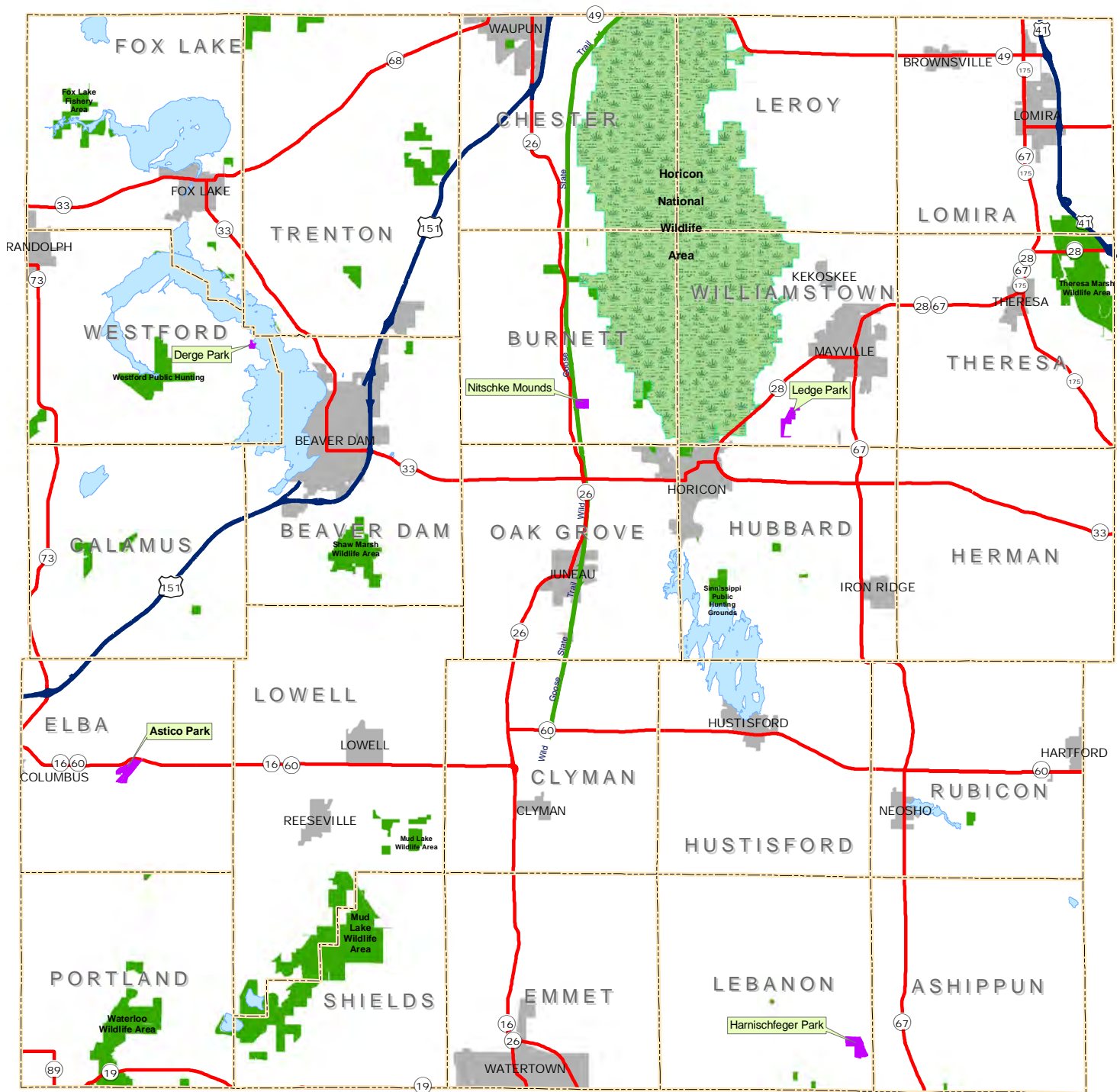
Dodge County
Land Resources and Parks
Department



Source: Dodge County Land Resources and Parks Department, January 2010



Map 4-4, County, State, & Federal Recreation Areas Dodge County, Wisconsin



Legend

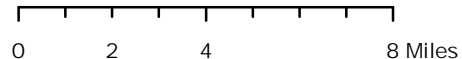
- U.S. Highway
- State Highway
- Town Boundaries
- Municipalities
- County Recreation Areas
- Federal and State Recreation Areas
- Horicon Marsh
- Lake



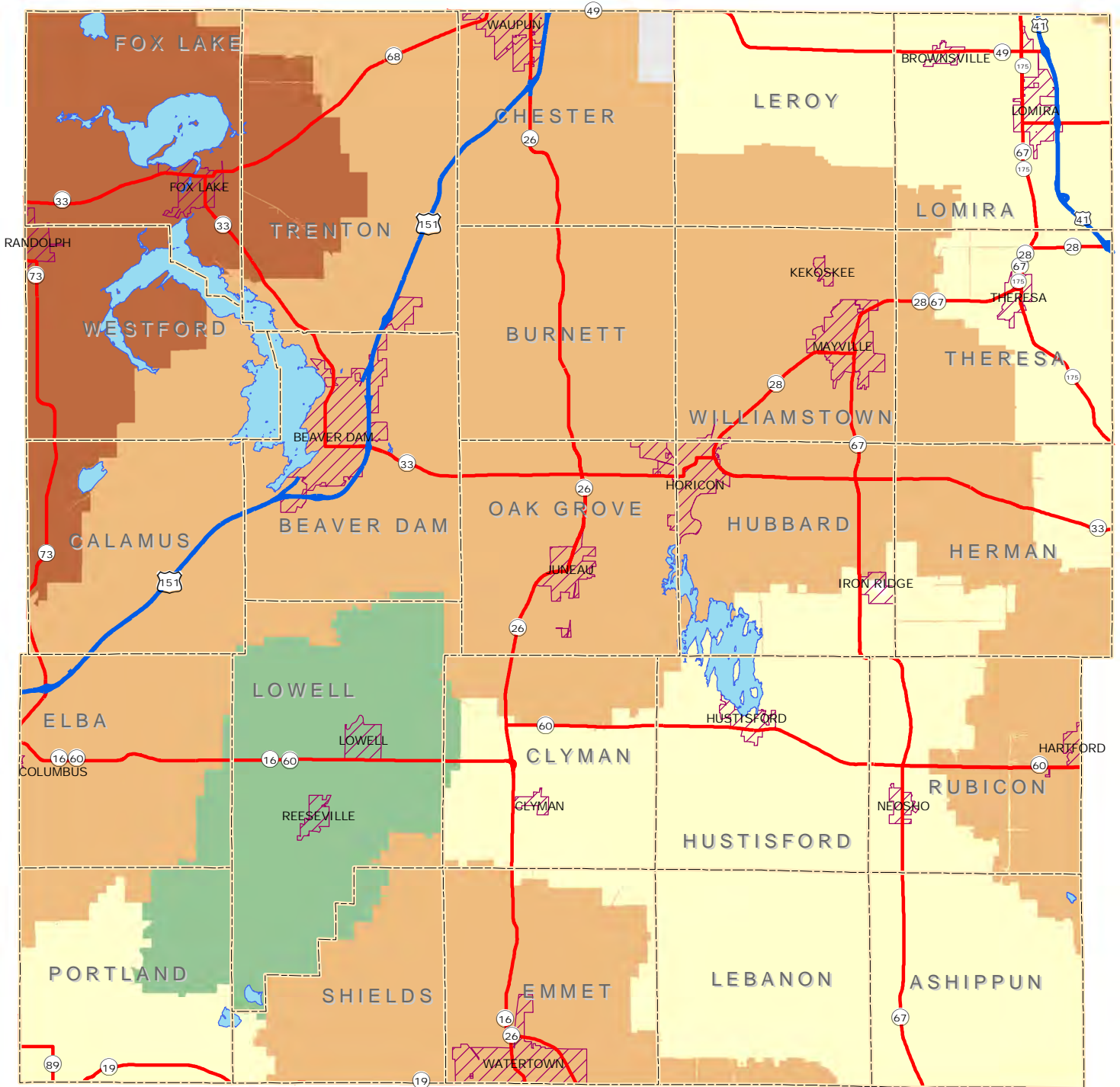
Dodge County
Land Resources and Parks
Department



Source: Dodge County Land Resources and Parks Department, January 2010



Map 4-5, Telephone Service Providers Dodge County, Wisconsin



Legend

	U.S. Highway		Century Tel, Inc.
	State Highway		AT&T
	Town Boundaries		Telephone and Data Systems, Inc.
	Municipalities		Unassigned Territory
	Lake		Verizon North, Inc.



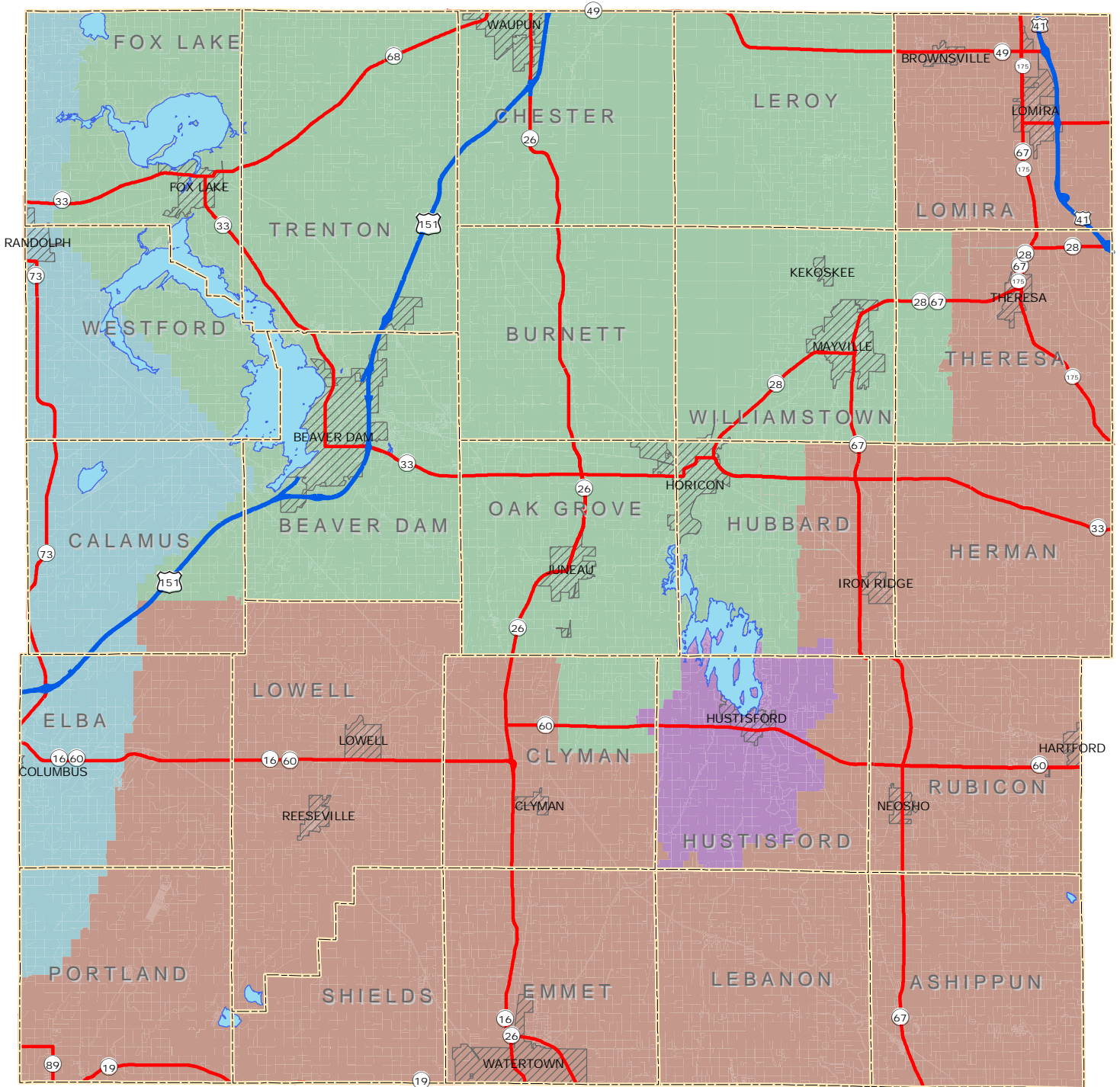
Dodge County
Land Resources and Parks
Department



Source: Dodge County Land Resources and Parks Department, January 2010
Derived from Wisconsin Department of Administration maps dated January 2009

0 2 4 8 Miles

Map 4-6, Electric Utilities and Cooperatives Dodge County, Wisconsin



Legend

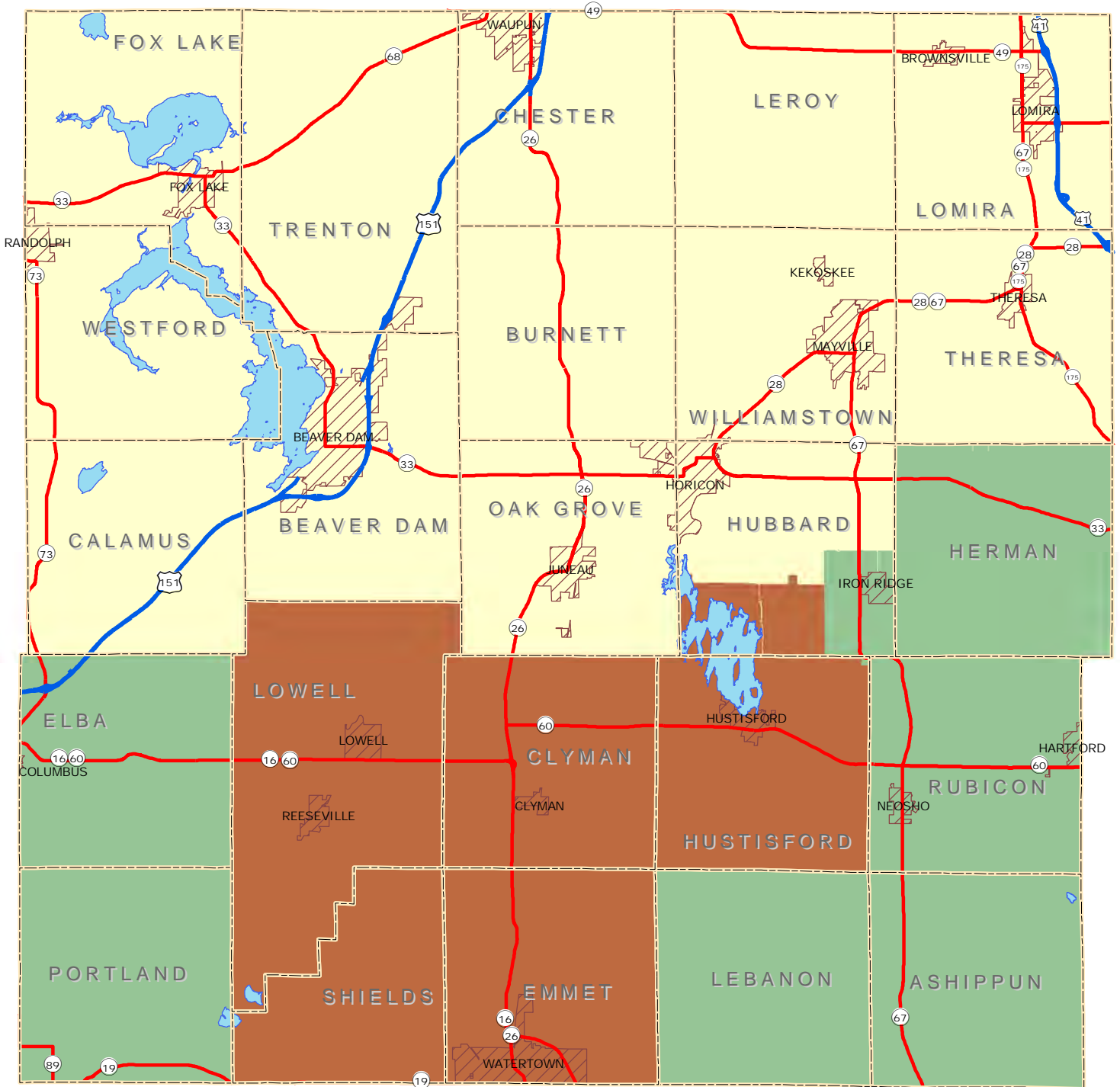
	U.S. Highway		Alliant Energy
	State Highway		Columbus Rural Electric Cooperative
	Town Boundaries		Hustisford Utilities
	Municipalities		WE Energies
	Lake		

Dodge County
Land Resources and Parks
Department

Source: Dodge County Land Resources and Parks Department, January 2010
 Derived from Wisconsin Department of Administration maps dated August 2008
 Hustisford Utilities provided data for their boundaries, December 2007



Map 4-7, Natural Gas Service Providers Dodge County, Wisconsin



Legend

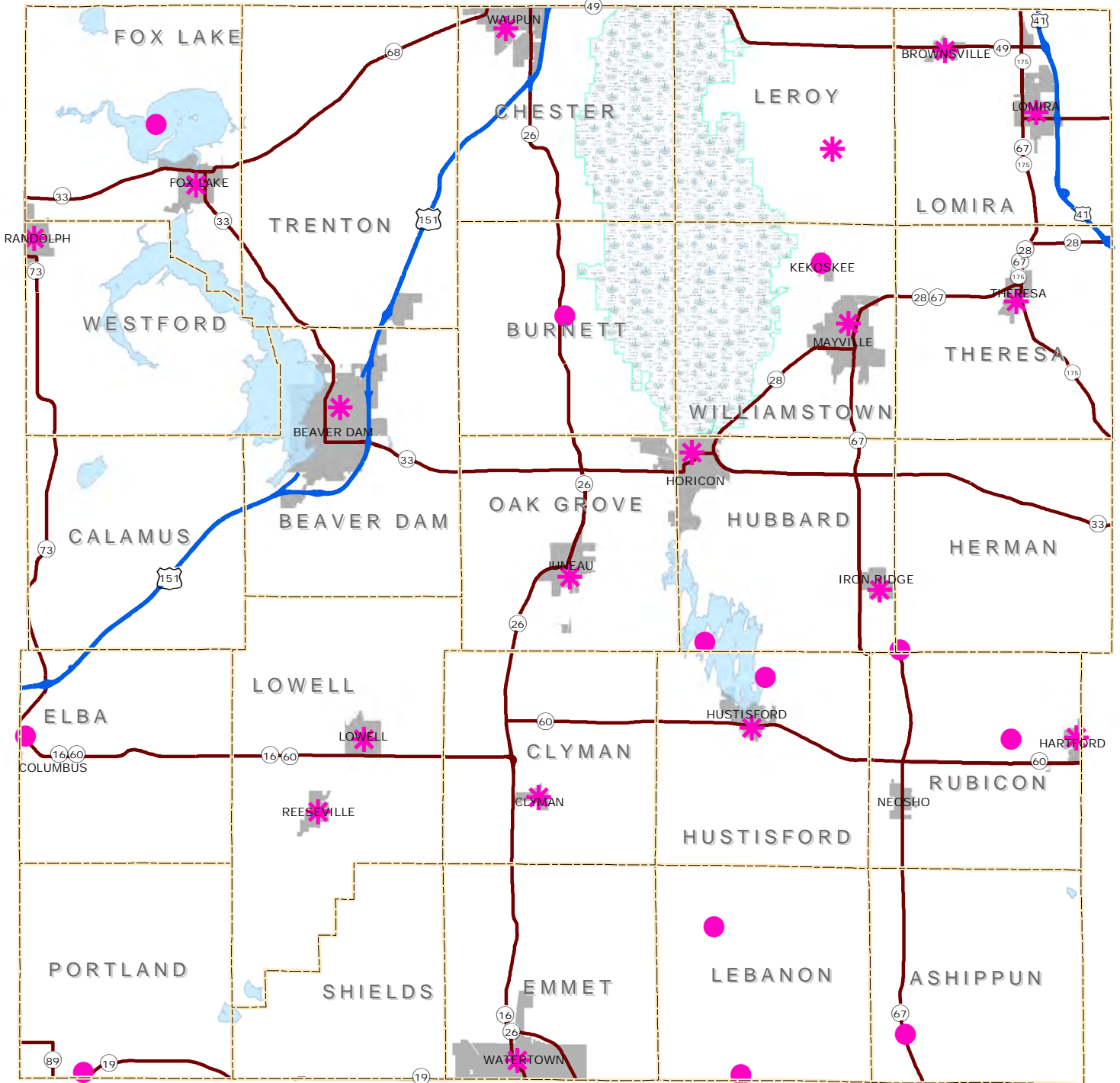
- U.S. Highway
- State Highway
- Town Boundaries
- Municipalities
- Lake
- WE Energies
- Wisconsin Gas Company
- Alliant Energy

Dodge County
 Land Resources and Parks
 Department

Source: Dodge County Land Resources and Parks Department, January 2010
 Derived from Wisconsin Department of Administration maps dated July 2008



Map 4-8, Public Sewer and Water Facilities Dodge County, Wisconsin



Legend

- U.S. Highway
- State Highway
- Town Boundaries
- Municipalities
- Public Sewer and Public Water Service
- Sanitary Districts with Public Sewer Service
- Horicon Marsh
- Lake

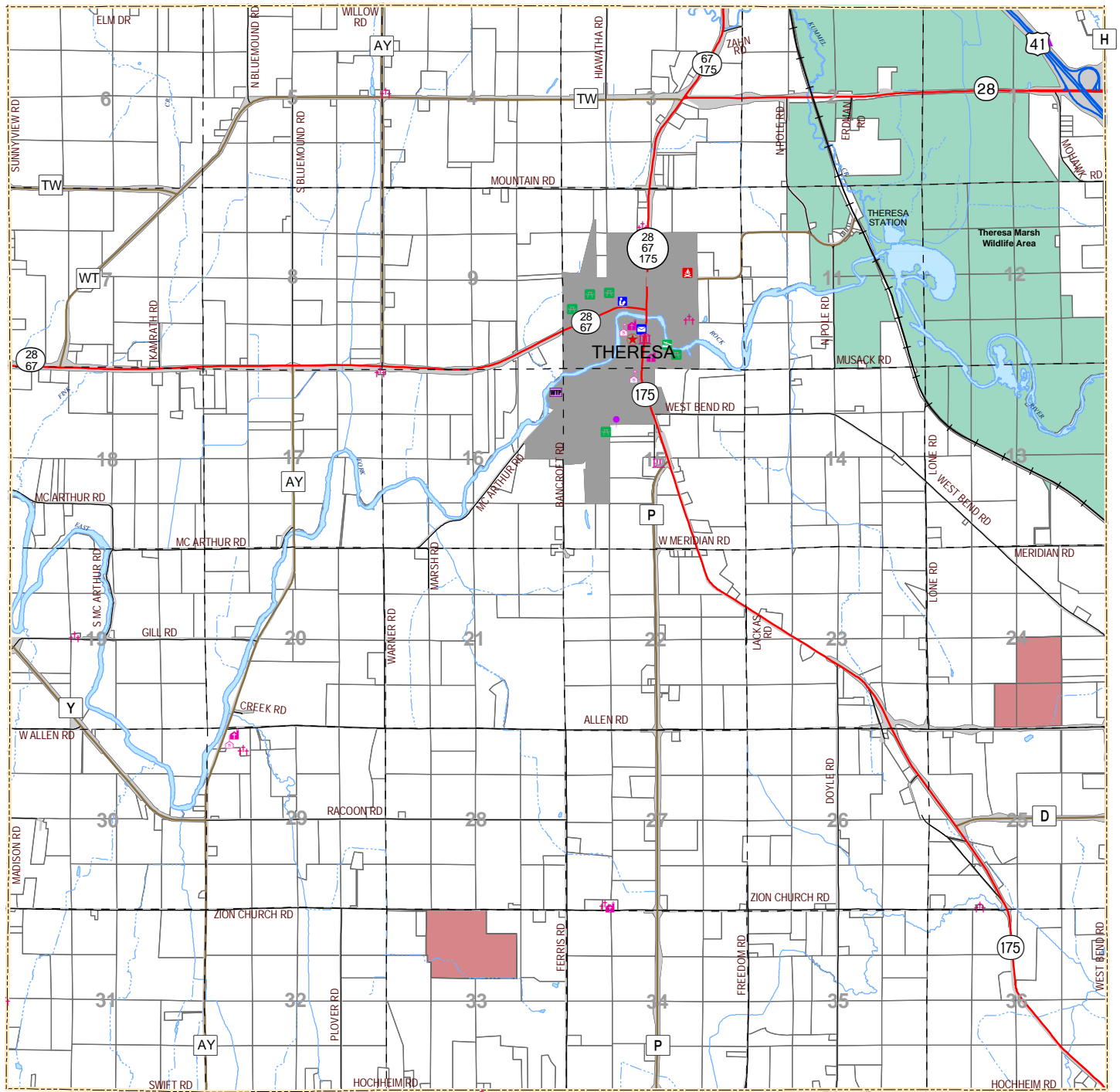


Dodge County
Land Resources and Parks
Department

Source: Dodge County Land Resources and Parks Department, January 2010



Map 4-9, Utilities and Community Facilities Town of Theresa, Dodge County, Wisconsin



Legend

U.S. Highway	Town Boundary	Cemetery	Post Office	Wildlife Area
State Highway	Railroad	Church	Fire Station	Sanitary Service Area
County Highway	Section Line	Correctional Facility	Police Station	Waste Treatment Plant
Town Road	Bike Trail	Municipal Hall	Park Area	Recycling
Waterbody	Municipalities	School	County Park	Town Dump (unused)
Rivers and Streams		Day Care	Park	Utility Station
		Nursing Home/Elderly Housing	Boat Launch	Communication Tower
		Hospital or Clinic	Golf Course	Water Tower
		Airport or Air Strip	Sportsman's Club	Active Mine Area
		Library	Wildlife Site	

Dodge County Wisconsin

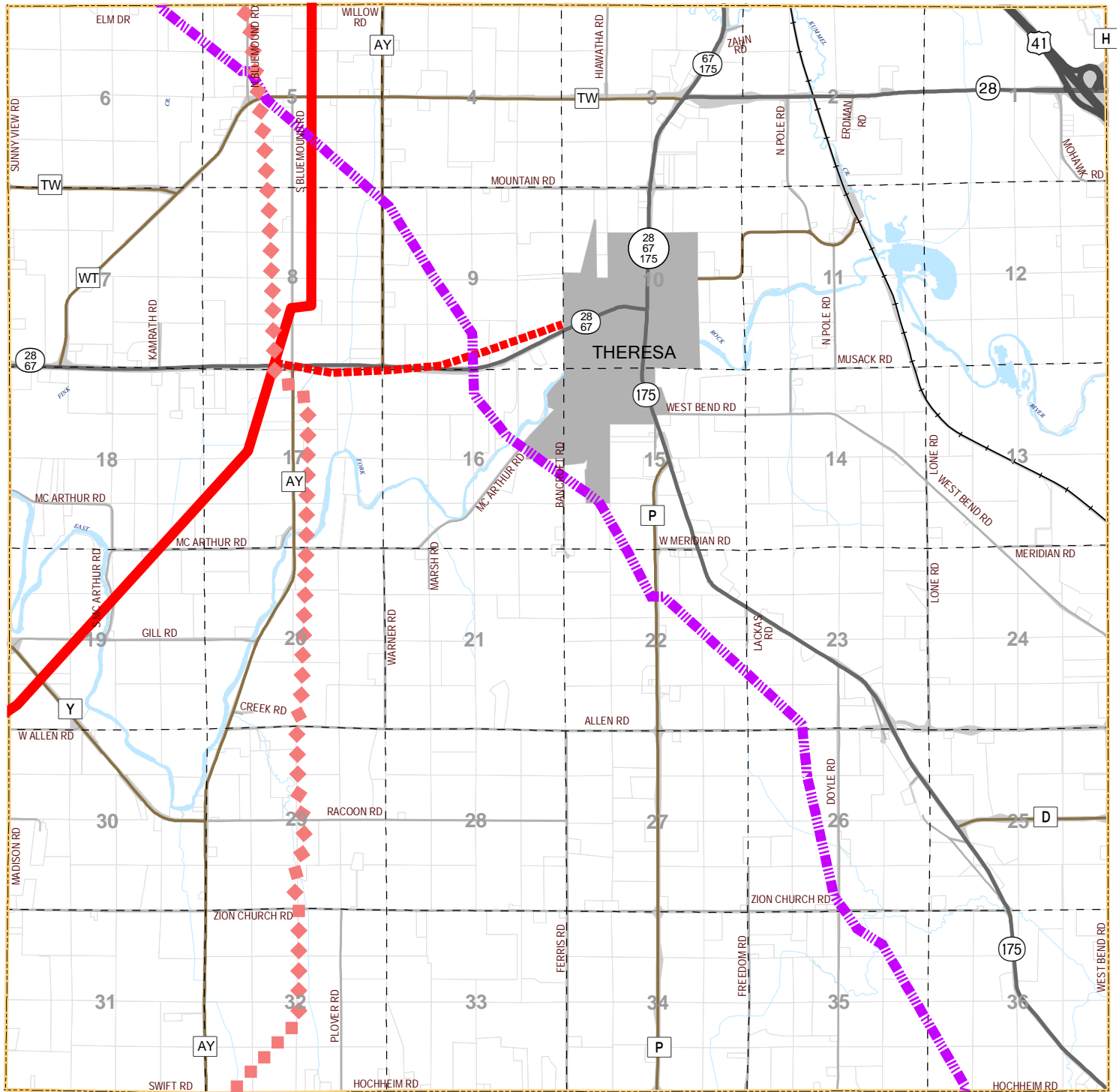
Town of Theresa

Dodge County Land Resources and Parks Department

0 0.35 0.7 1.4 Miles

Source: Dodge County Land Resources and Parks Department, January 2010

Map 4-10, Existing Pipelines 2010 Town of Theresa, Dodge County, Wisconsin



Legend		Pipelines	
	U. S. Highway		Guardian Natural Gas Pipeline
	State Highway		Koch 10" Petroleum Products Pipeline
	County Highway		10" Natural Gas Pipeline
	Town Road		4" Natural Gas Pipeline
	Railroad		Town Boundary
	River or Stream		Section Line
	Waterbodies		Municipalities

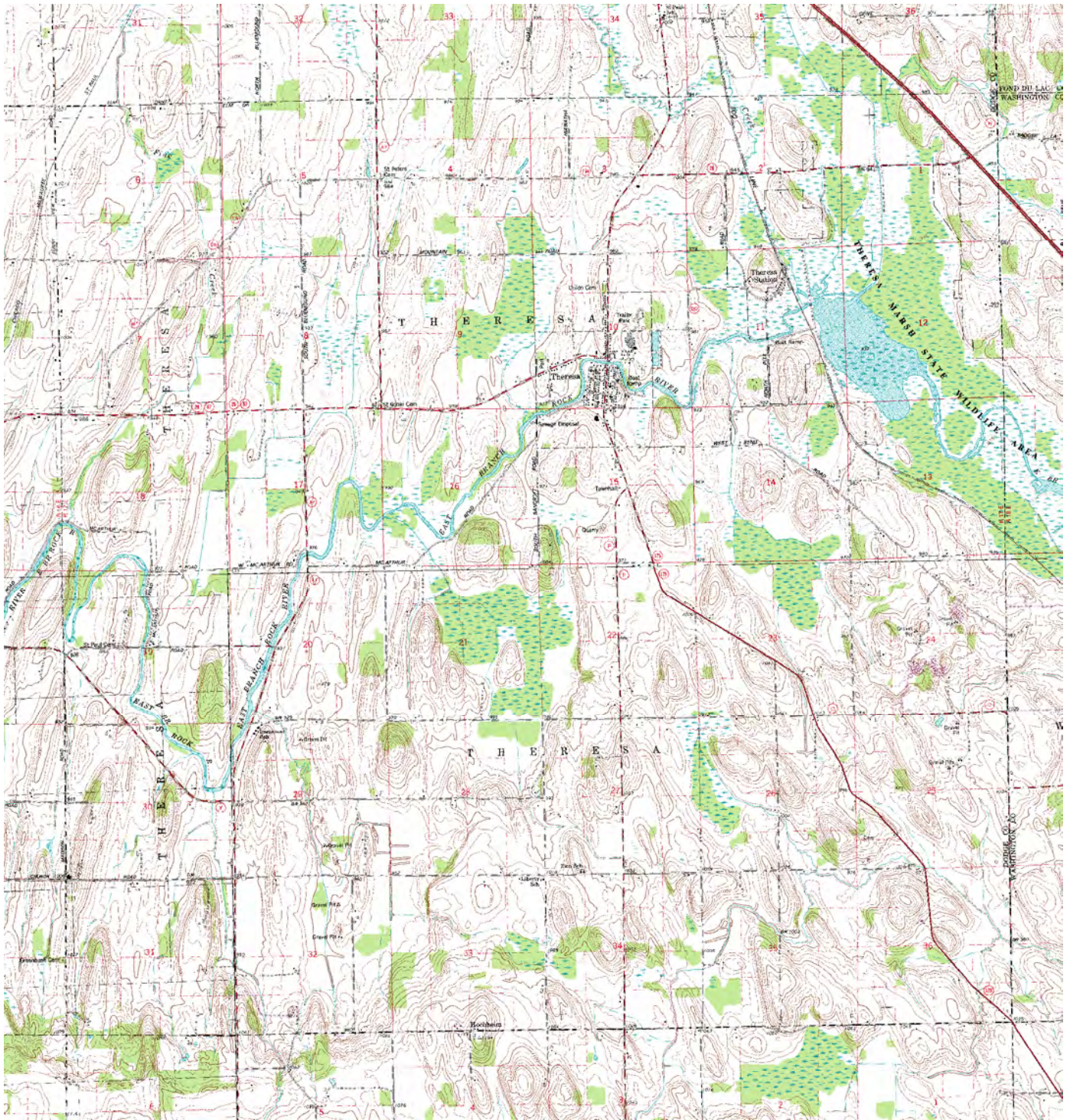
Dodge County
Land Resources and Parks
Department

Dodge County Wisconsin
Town of Theresa

Source: Dodge County Land Resources and Parks Department, January 2010



Map 5-1, Topography Town of Theresa, Dodge County, Wisconsin



LEGEND



WETLANDS AREA

CONTOUR INTERVAL 20'

DODGE COUNTY

LAND RESOURCES AND PARKS

DEPARTMENT

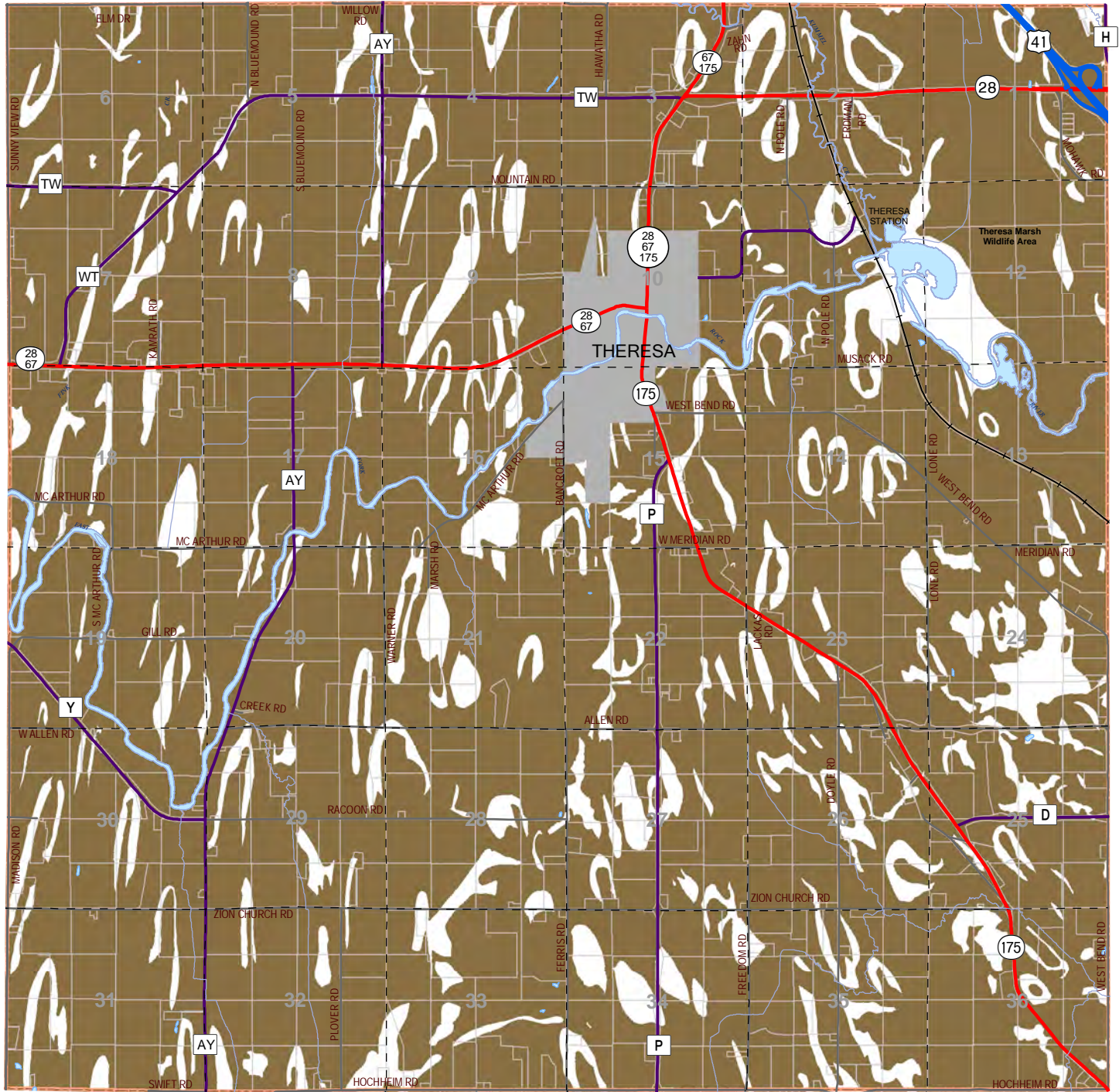
CREATED:
JANUARY 1996
S. JANSEN
REVISED:
JANUARY 2010



1 inch = 5,000 feet



Map 5-2, Prime Agricultural Soils Town of Theresa, Dodge County, Wisconsin



Legend

	U. S. Highway		Town Boundary
	State Highway		Section Line
	County Highway		River or Stream
	Town Road		Waterbodies
	Railroad		Prime Soils
			Municipalities

Dodge County Wisconsin

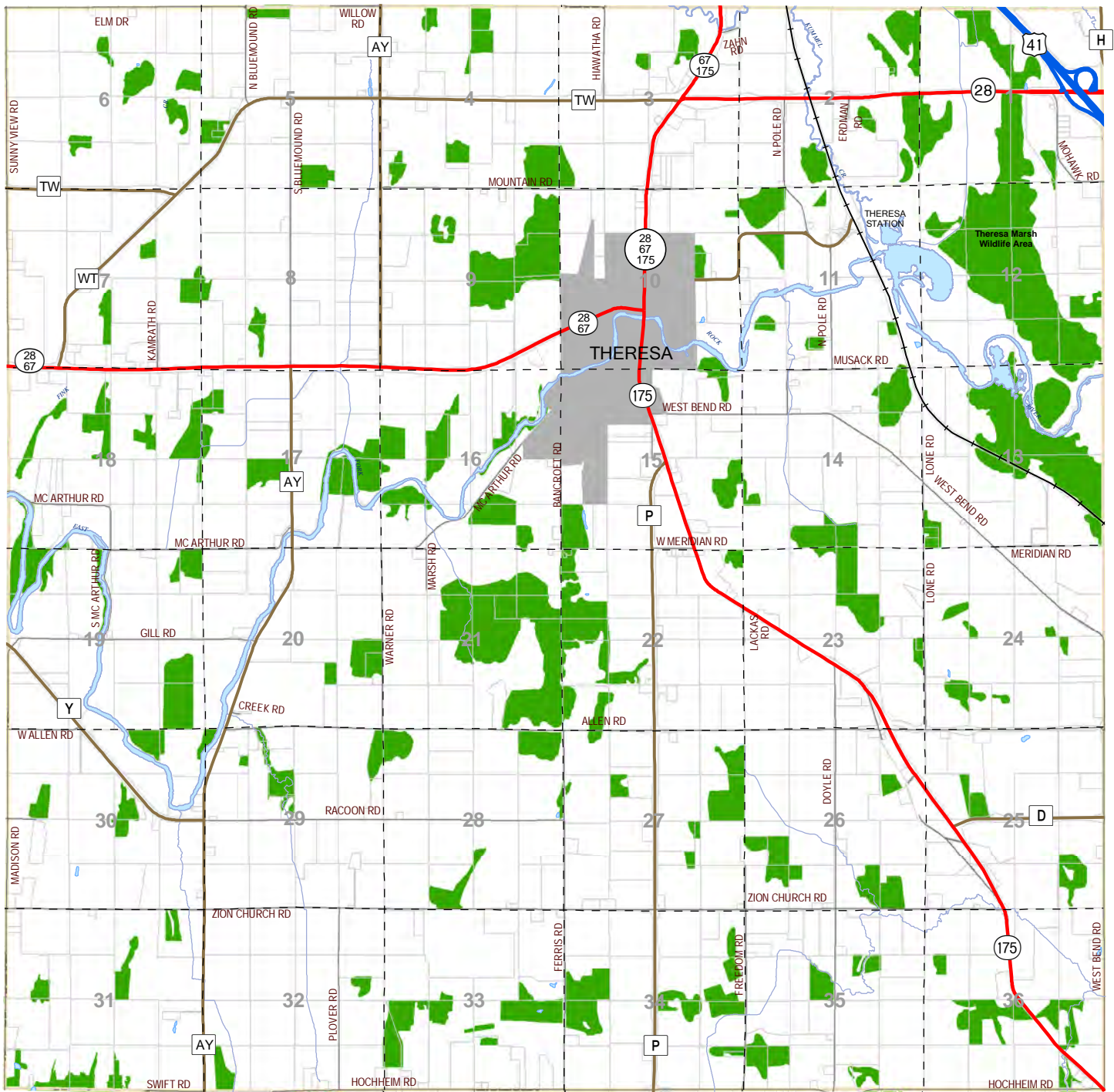
Town of Theresa

Dodge County
Land Resources and Parks
Department

0 0.45 0.9 1.8 Miles

Source: Dodge County Land Resources and Parks Department, January 2010
Derived from US Department of Agriculture, Soil Conservation Service files, August 1998

Map 5-3, Woodlots Town of Theresa, Dodge County, Wisconsin



Legend

- U. S. Highway
- State Highway
- County Highway
- Town Road
- Railroad
- Town Boundary
- Section Line
- River or Stream
- Waterbodies
- Woodlots
- Municipalities

Dodge County
 Land Resources and Parks
 Department

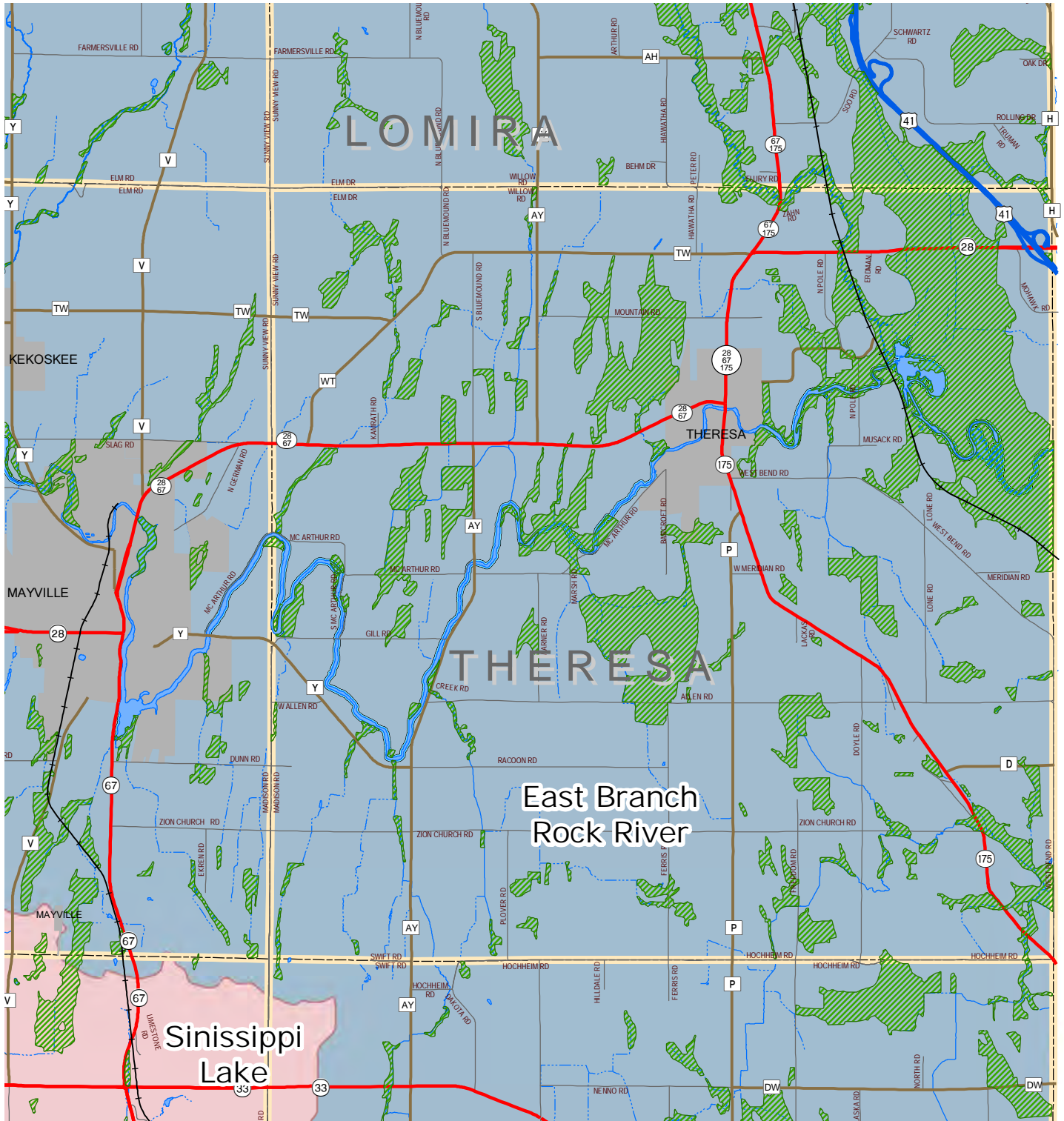
Dodge County Wisconsin

Town of Theresa

Source: Dodge County Land Resources and Parks Department, January 2010



Map 5-4, Wetlands, Watersheds, Streams and Surface Water Town of Theresa, Dodge County, Wisconsin



Legend		Watersheds	
	U.S. Highway		Ashippun River
	State Highway		Beaver Dam River
	County Highway		Calamus Creek
	Town Road		East Branch Rock River
	Railroad		East and West Branches Milwaukee River
	Town Boundary		Lower Crawfish River
	Wetlands		Mauneshia River
	Lakes and Ponds		Middle Rock River
	Rivers and Streams		Oconomowoc River
	Streams		Rubicon River
	Intermittent Streams		Sinissippi Lake
	Horicon Marsh		Upper Crawfish River
	Municipalities		Upper Rock River
			Lower Grand River

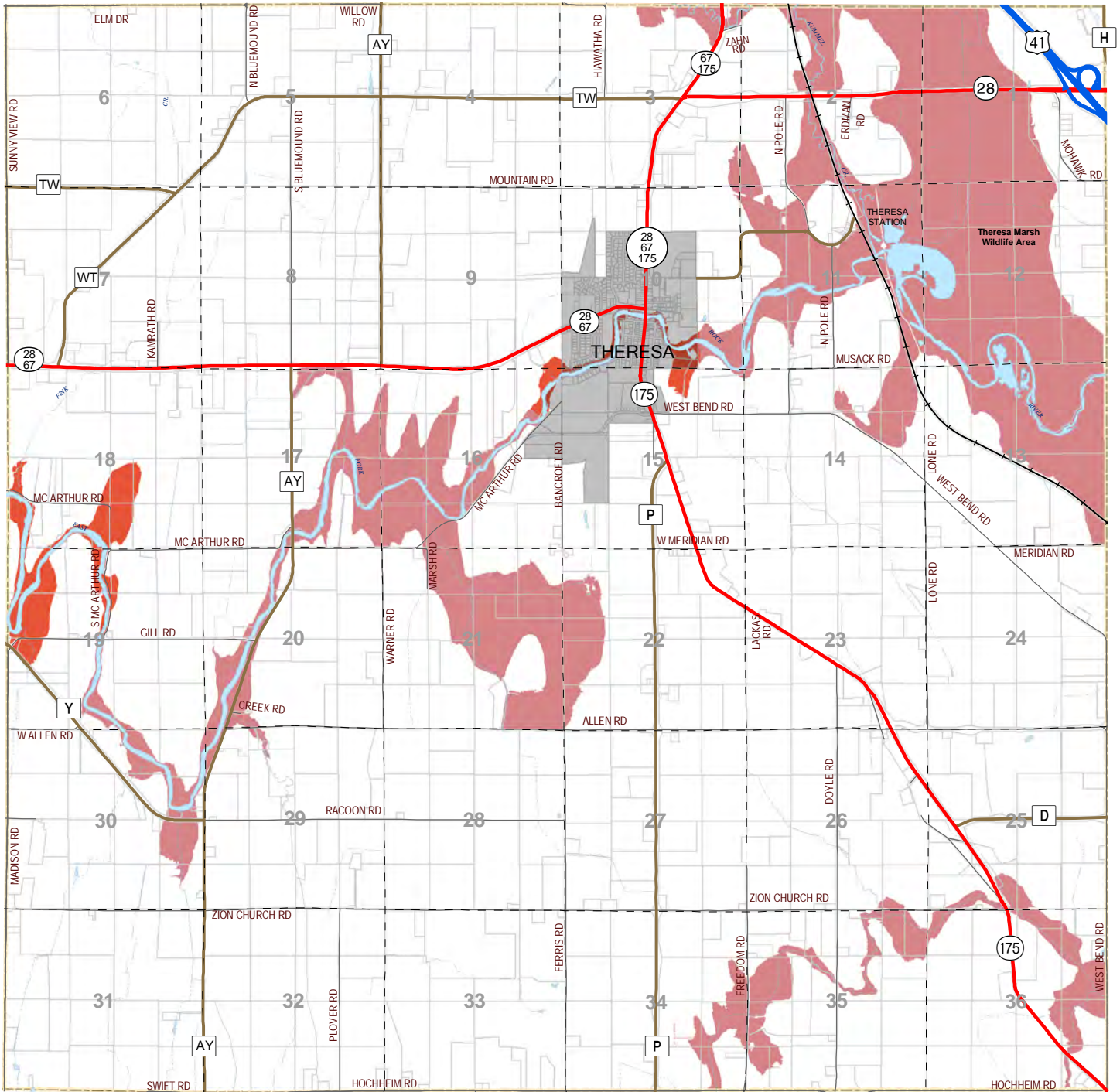
Dodge County
Land Resources and Parks
Department

Town of Theresa

Source: Dodge County Land Resources and Parks Department, January 2010
Watersheds and Wetlands from DNR

0 0.35 0.7 1.4 Miles

Map 5-5, Floodplains Town of Theresa, Dodge County, Wisconsin



Legend

	U. S. Highway		Section Line
	State Highway		River or Stream
	County Highway		Intermittent Stream
	Town Road		Waterbody
	Railroad		Intermittent Pond
	Town Boundary		City or Village
			ZONE A No Base Flood Elevations determined
			ZONE AE Base Flood Elevations determined
			0.2 Percent Annual Chance Flood Hazard

Dodge County Wisconsin

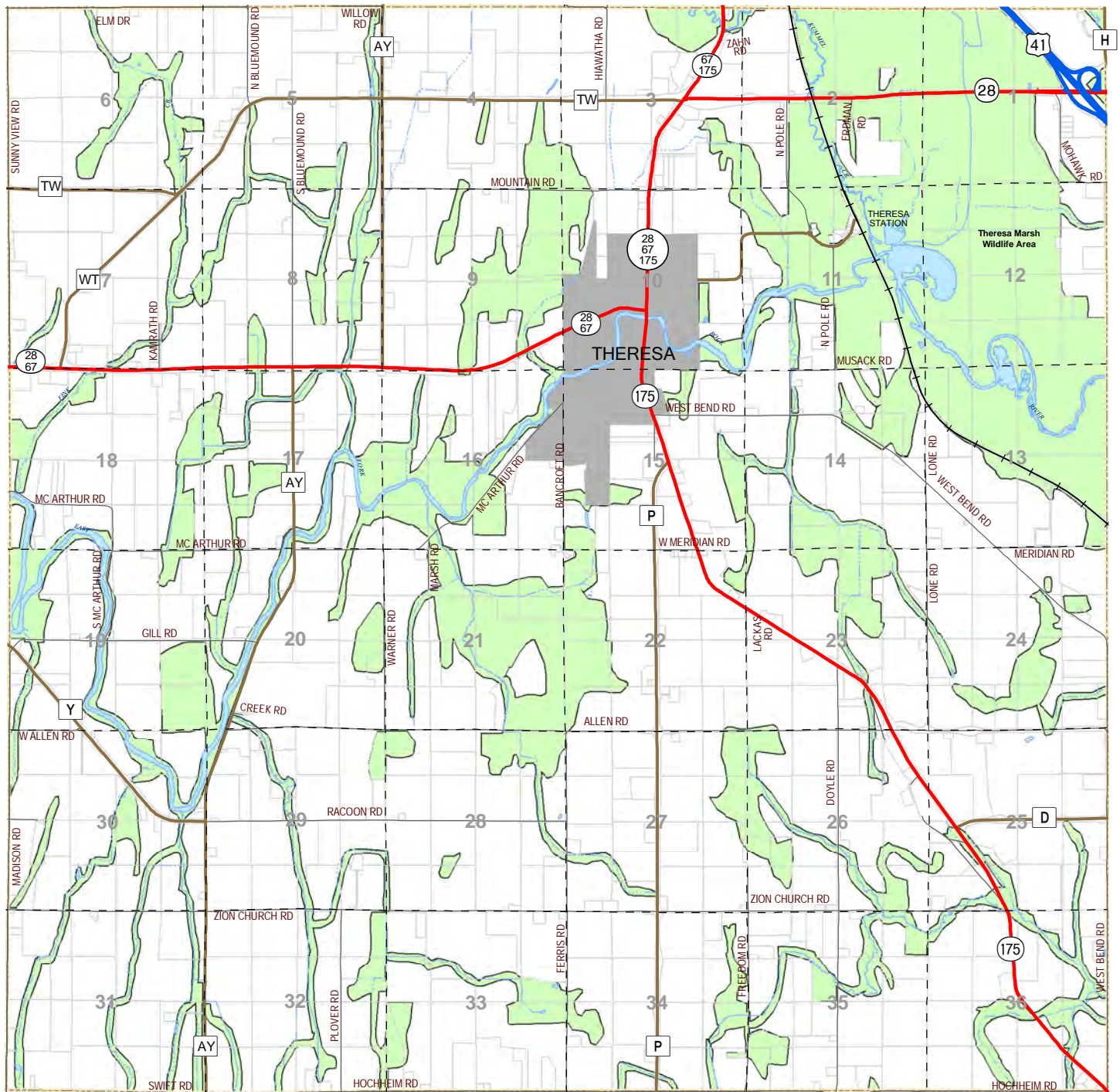
Dodge County
Land Resources and Parks
Department

Town of Theresa

Source: Dodge County Land Resources and Parks Department, January 2010
Created from Flood Insurance Rate Map effective April 19, 2010.



Map 5-6, Environmental Corridors Town of Theresa, Dodge County, Wisconsin

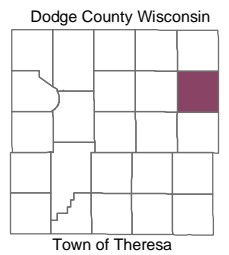


Legend

	U. S. Highway		Town Boundary
	State Highway		Section Line
	County Highway		River or Stream
	Town Road		Intermittent Stream
	Railroad		Waterbodies
			Environmental Corridors
			Municipalities



Dodge County
Land Resources and Parks
Department

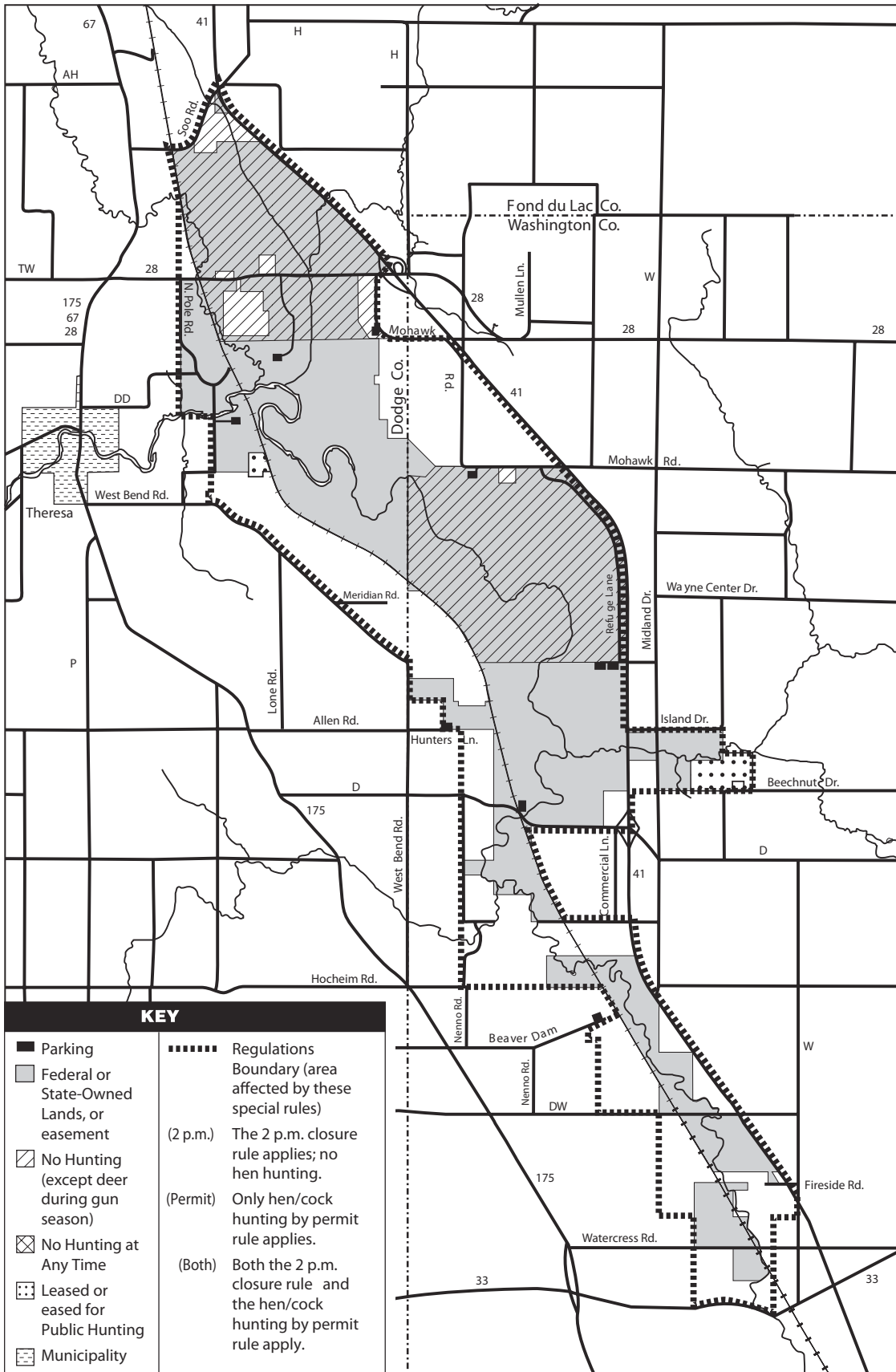


Source: Dodge County Land Resources and Parks Department, January 2010

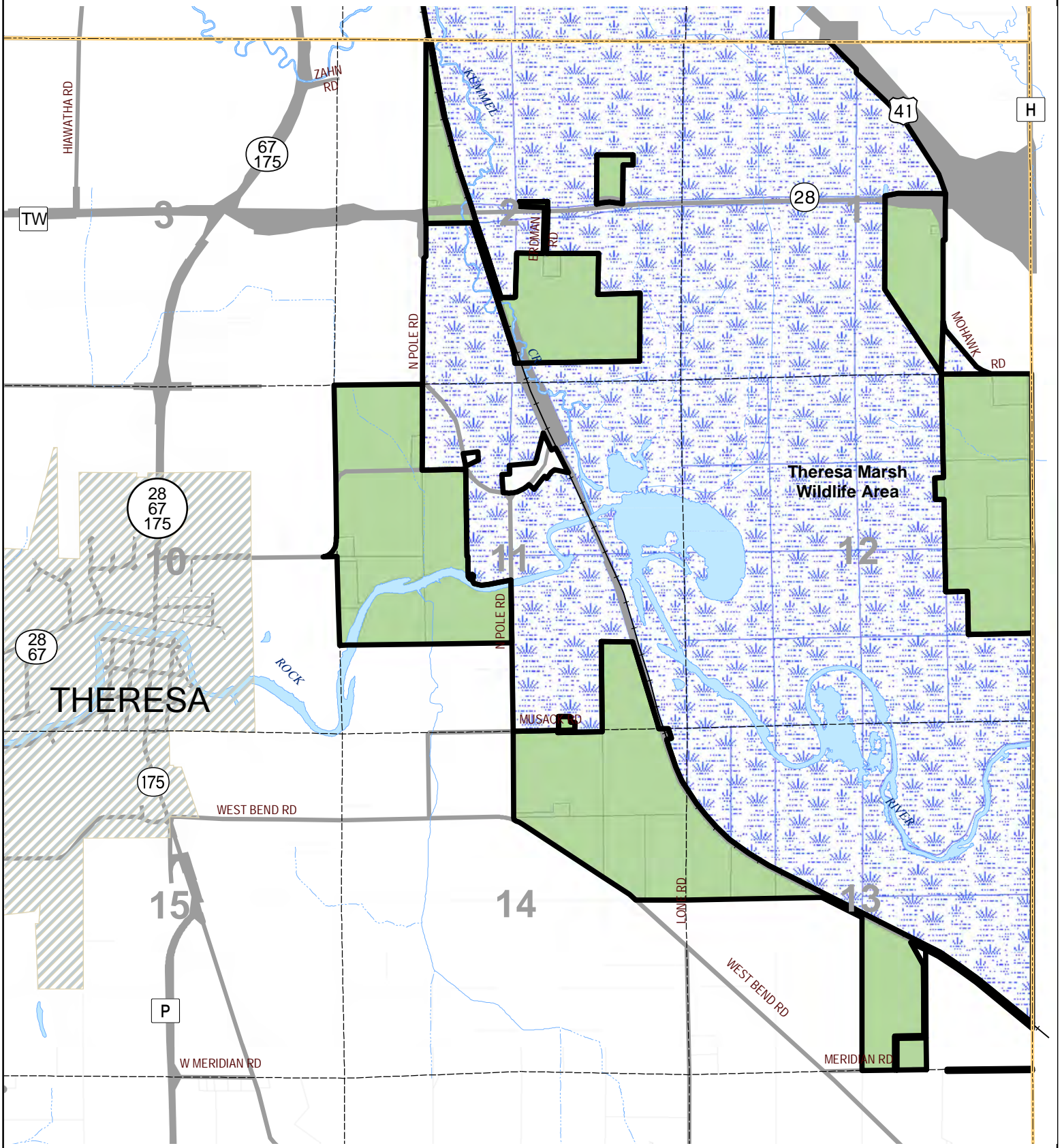


Map 5-7, Theresa Marsh Wildlife Area



Dodge and Washington Counties



Map 5-8, Theresa Marsh Wildlife Area And Acquisition Area And Boundary, 2010
Town of Theresa, Dodge County, Wisconsin



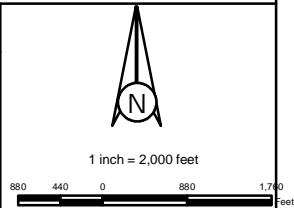
LEGEND

-  Theresa Marsh Wildlife Area
-  Theresa Marsh Acquisition Boundary and Area

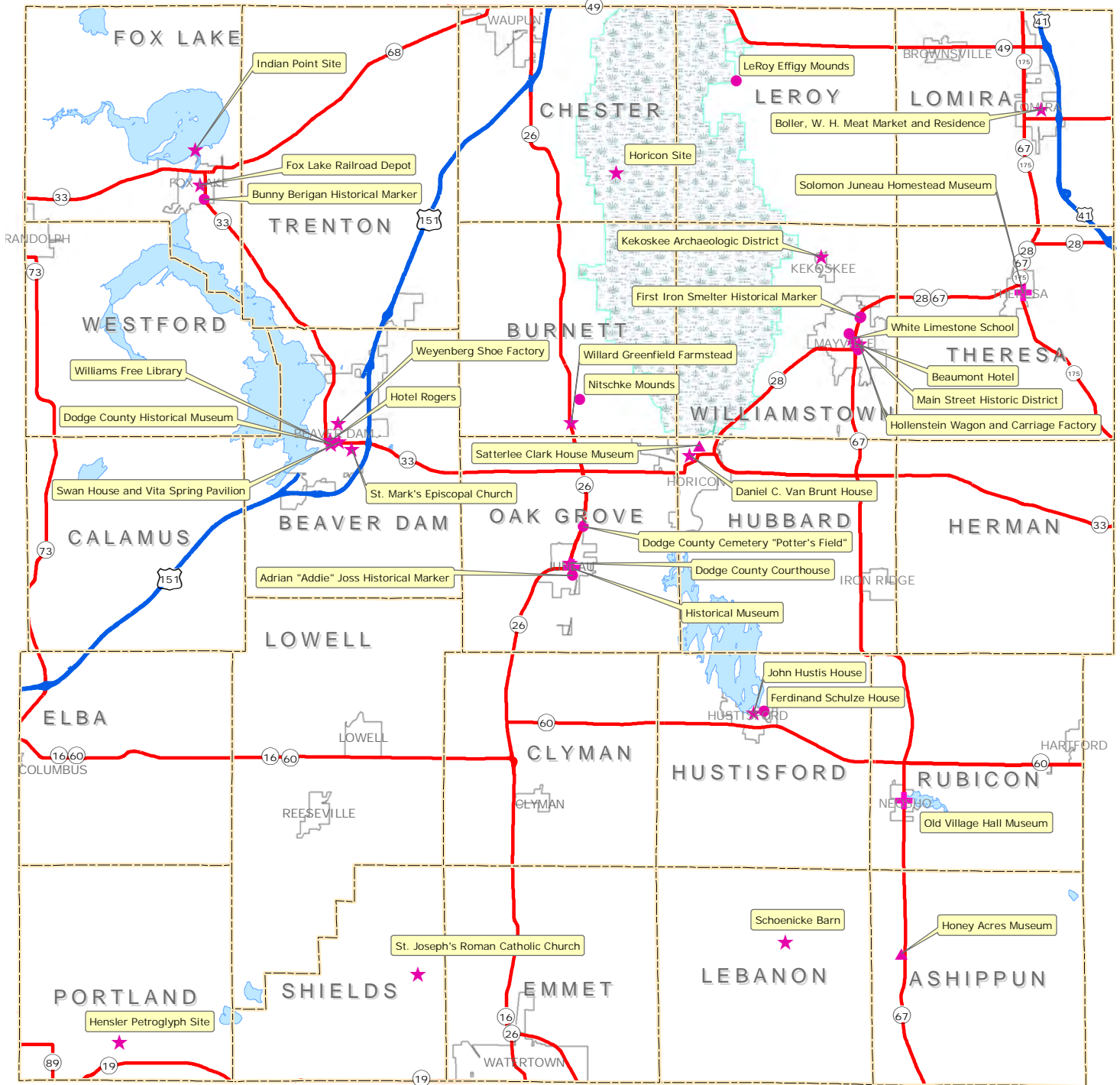
Source: Dodge County Land Resources and Parks Department, 1996.
Updated January 2010

DODGE COUNTY
LAND RESOURCES AND PARKS
DEPARTMENT

CREATED:
JANUARY 1996
S. JANSEN
REVISED:
JANUARY 2010



Map 5-9, Historical, Cultural, and Archaeological Resources Dodge County, Wisconsin



Legend

	U.S. Highway		Cultural Site
	State Highway		Museum
	Town Boundaries		Museum - Historical Society
	Municipalities		State or National Register Site
	Horicon Marsh		
	Lake		

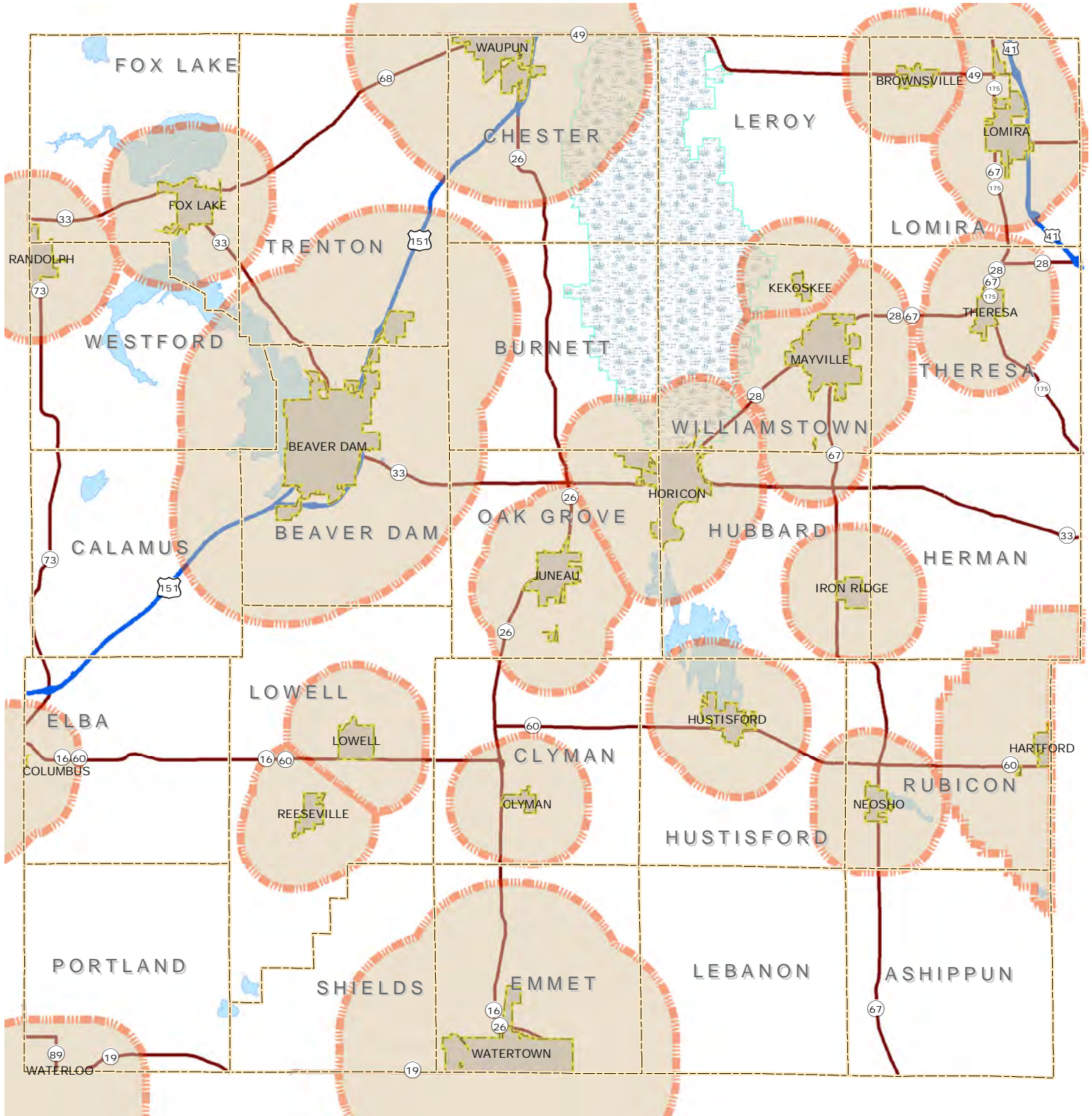
Burials are not shown due to protection

N
W E
S

Dodge County
Land Resources and Parks
Department

Source: Dodge County Land Resources and Parks Department, January 2010

Map 7-1, Extraterritorial Jurisdiction Dodge County, Wisconsin

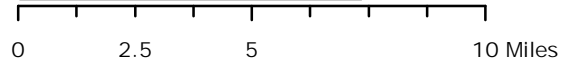


Legend

- U.S. Highway
- State Highway
- Town Boundaries
- Municipalities
- Extraterritorial Jurisdiction Boundary
- Horicon Marsh
- Lake

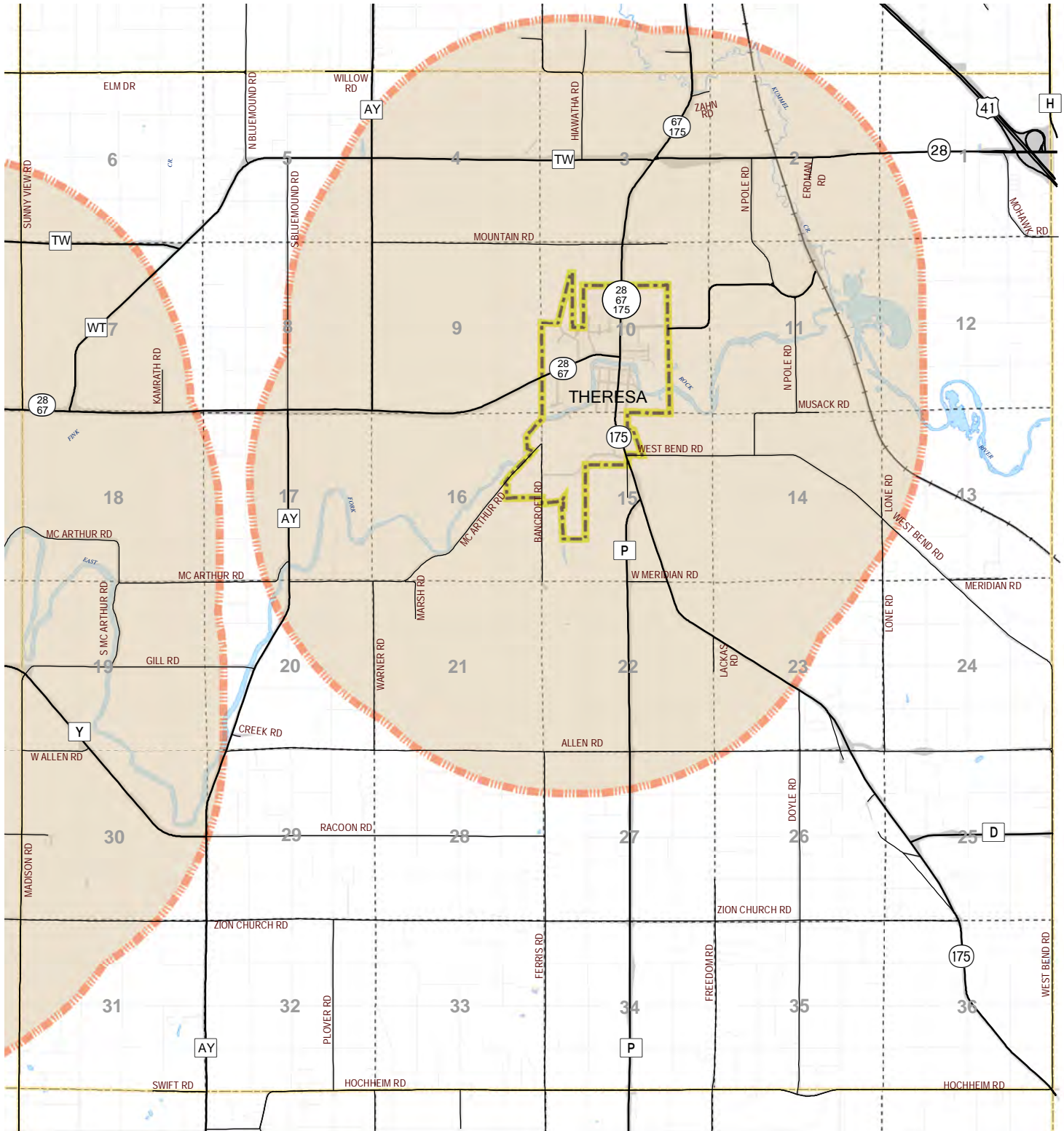


Map Prepared By:
Dodge County
Land Resources and Parks
Department




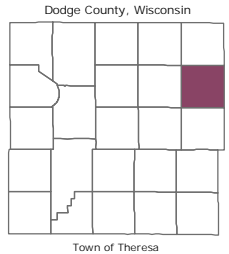
Source: Dodge County Land Resources and Parks Department, January 2010

Map 7-2, Theresa Extraterritorial Jurisdiction Town of Theresa, Dodge County, Wisconsin



Symbols	
	U.S. Highway
	State Highway
	County Highway
	Town Road
	Railroad
	Town Boundary
	Section Line
	Tax Parcel Boundary
	Road & Railroad Right-of-Way
	City or Village
	City and Village Jurisdictional Area
	River and Stream
	Intermittent Stream

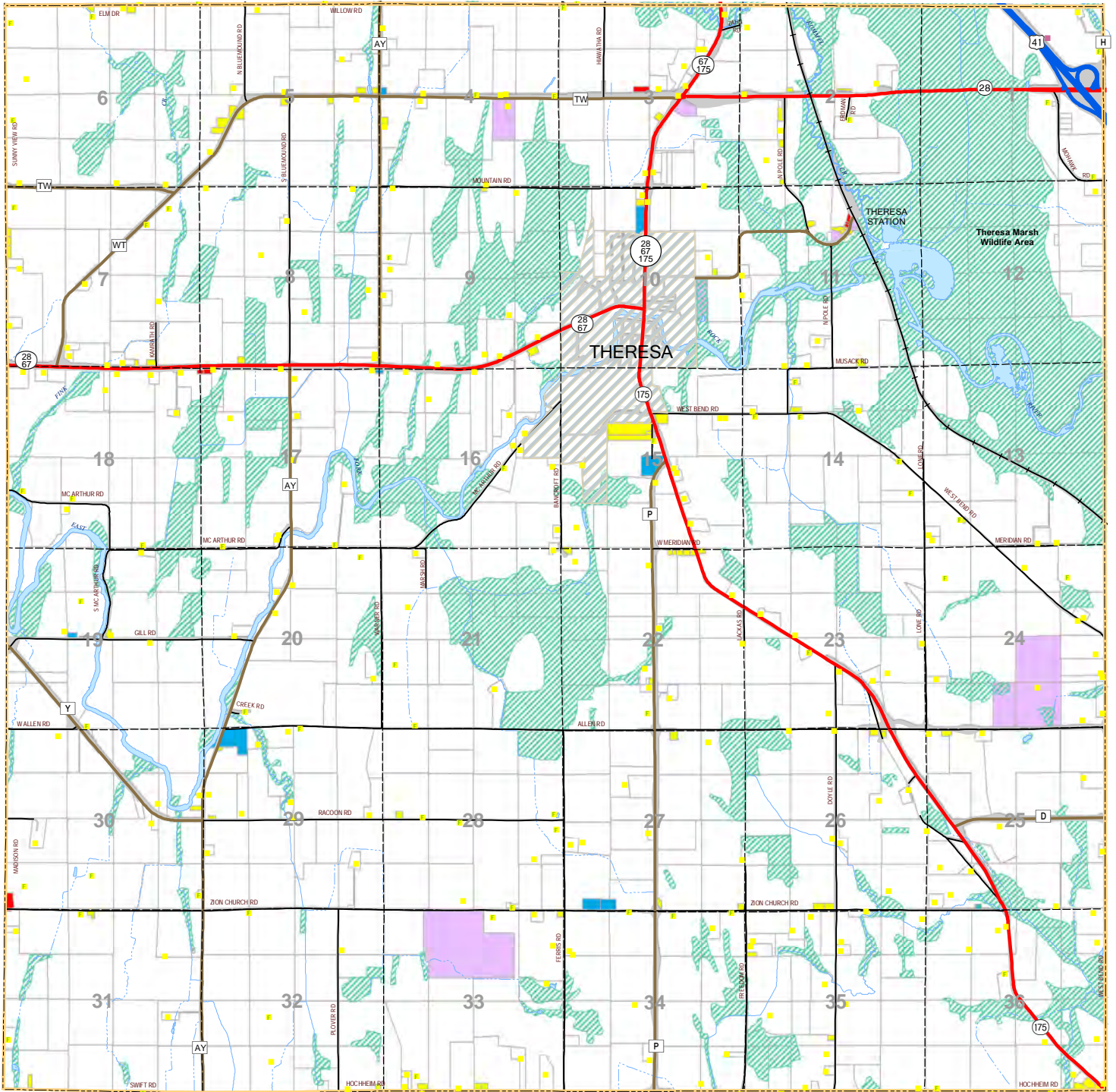

 Dodge County
 Land Resources and Parks
 Department



Source: Dodge County Land Resources and Parks Department, January 2010

0 1,900 3,800 7,600 Feet

Map 8-1, Existing Land Use Town of Theresa, Dodge County, Wisconsin



Legend

U.S. Highway	Section Line	Single Family Residential	Public & Quasi-Public
State Highway	Tax Parcel Boundary	Farmstead	Transportation
County Highway	Municipalities	Two Family Residential	Parks & Recreation
Town Road	Waterbody	Multi-Family Residential	Agriculture-Other Resource
Railroad	Rivers and Streams	Mobile Home Park	Communication & Utilities
Town Boundary	Intermittent Stream	Commercial	Wetland overlay
		Industrial	

Dodge County
Land Resources and Parks
Department

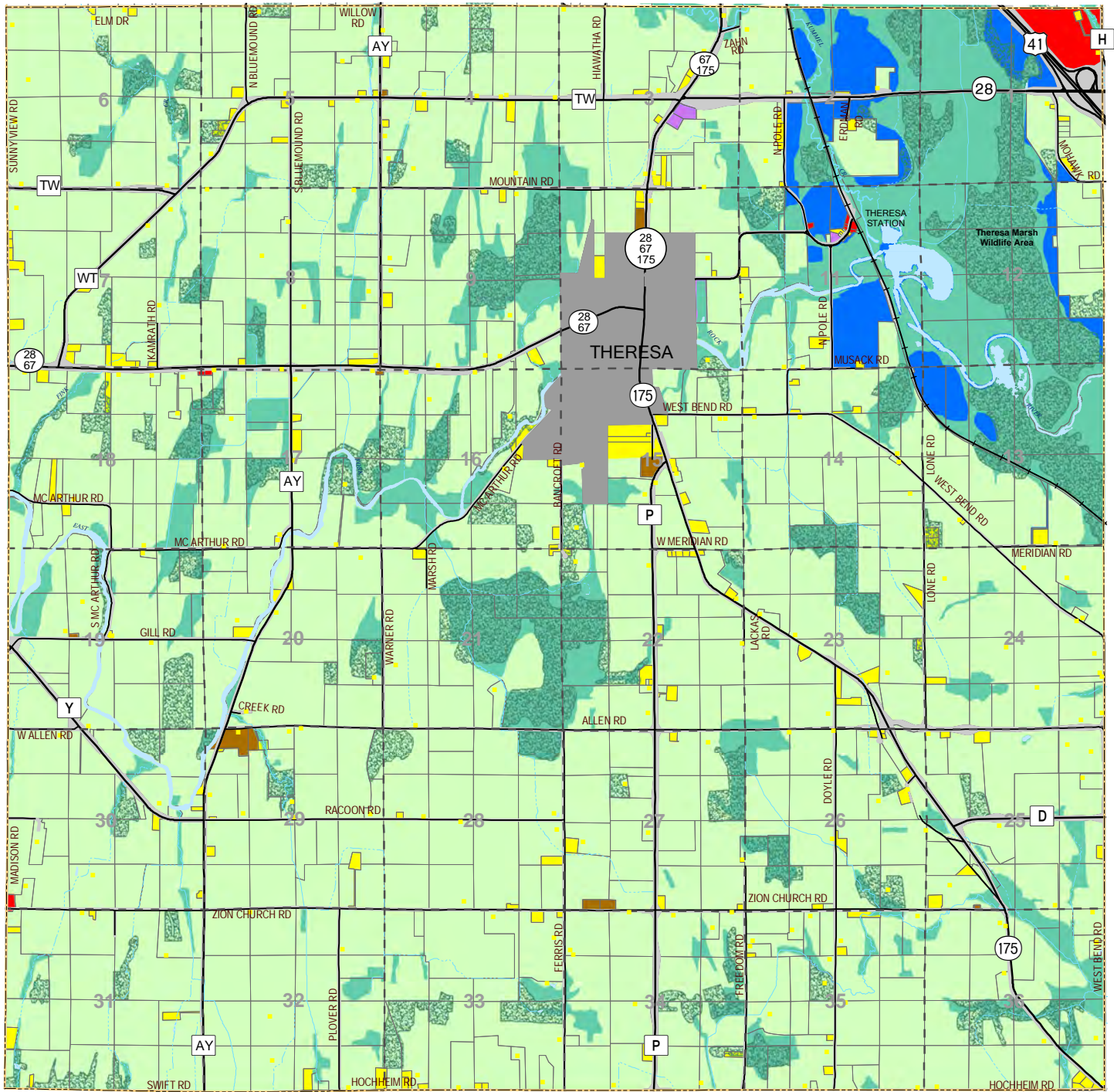
Dodge County Wisconsin

Town of Theresa

Source: Dodge County Land Resources and Parks Department, January 2010; Land use survey June 2005



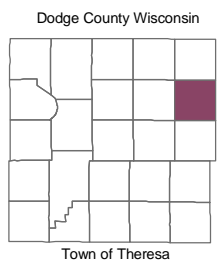
Map 8-2, Year 2030 Future Land Use Town of Theresa, Dodge County, Wisconsin



Symbols		Future Land Use	
	U.S. Highway		Single Family Residential
	State Highway		General Residential
	County Highway		Commercial
	Town Road		Industrial
	Railroad		City or Village
	Town Boundary		Road & Railroad Right-of-Way
	Section Line		Future Road
	Tax Parcel Boundary		Recreation
	Woodlands		Conservancy
			Agriculture
			Waterbody
			River and Stream
			Intermittent Stream
			Utilities & Community Services



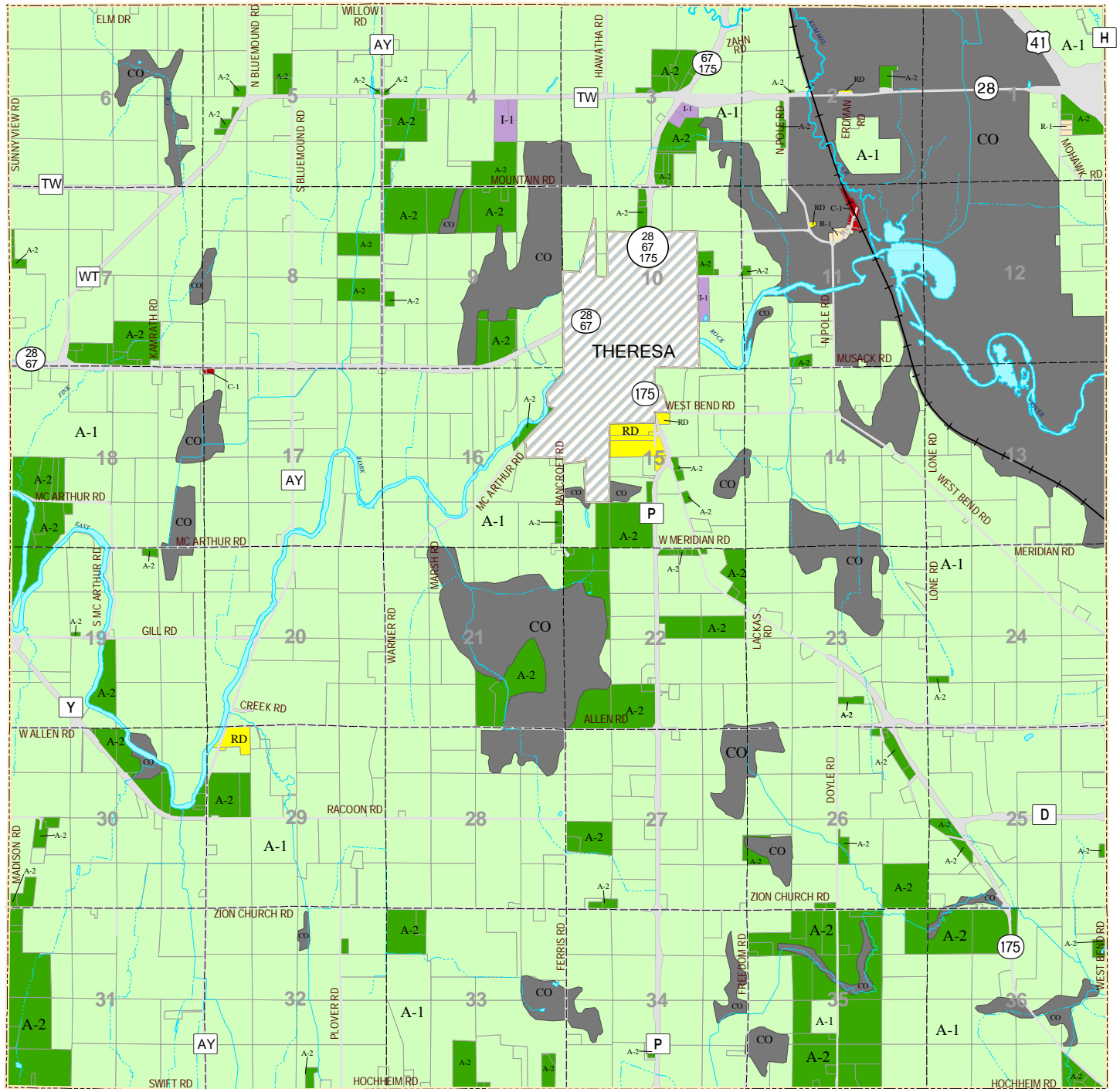
Dodge County
Land Resources and Parks
Department



Source: Dodge County Land Resources and Parks Department, January 2010.



Map 9-1, Existing Town Zoning Town of Theresa, Dodge County, Wisconsin



Legend		Zoning	
	U. S. Highway		Prime Agricultural
	State Highway		General Agricultural
	County Highway		Conservancy
	Town Road		Industrial
	Railroad		Single Family Residential
	Town Boundary		Rural Development
	Section Line		Commercial
	Tax Parcel Boundary		Village
			Road Right of Way
			Waterbody

Dodge County Wisconsin

Town of Theresa

Dodge County
Land Resources and Parks
Department